



COLORADO
Department of Education

2019 BPEG Symposium

Adam Collins, Ph.D.

Keely Garren, M.A.

Scott Ross, Ph.D.

April 29, 2019



State of the Grant

Review of BPEG Cohort 1

2016

2017

2018

2019

October, 2016: Cohort 1 BPEG applications submitted

December, 2016: First cohort of BPEG grantees accepted

Review of BPEG Cohort 1

2016

2017

2018

2019

October, 2016: Cohort 1 BPEG applications submitted

December, 2016: First cohort of BPEG grantees accepted

March, 2017: BPEG Kickoffs – First BPEG Self-Assessment completed

Spring, 2017: Grantees completed baseline student survey

Fall, 2017: Grantees began implementing bullying prevention best practices

Review of BPEG Cohort 1

2016

2017

2018

2019

Spring, 2018: Grantees completed second student survey and BPEG Self-Assessment

Fall, 2018: First results on the impact of the BPEG in reducing bullying revealed

November, 2018: Second round of the BPEG began accepting applications

Review of BPEG Cohort 1

2016

2017

2018

2019

Spring, 2018: Grantees completed second student survey and BPEG Self-Assessment

Fall, 2018: First results on the impact of the BPEG in reducing bullying revealed

November, 2018: Second round of the BPEG began accepting applications

Summer, 2019: Cohort 2 BPEG grantees finalized

Cohort 1 by the Numbers

31,858

Students Impacted by the BPEG Each Year on Average

62% FARL

52% Males

48% Females

50% Latino

39% White

5% Black

11,906

Students Surveyed Each Year on Average

188

Total Self-Assessments Completed

Bullying Prevention Best Practices

Great improvement on implementing bullying prevention best practices

Measured through the BPEG Self-Assessment

BPEG School Fidelity Self-Assessment

You can use the School Bullying Prevention and Education Grant (BPEG) Self-Assessment form annually to provide CDE your BPEG Self-Assessment scores. If you are already completing the Self-Assessment on paper, you will be able to quickly transfer your scores onto this form. When completed, CDE will provide you with a link to access a data dashboard to analyze your data.

* Required



What is your name? *

Your answer

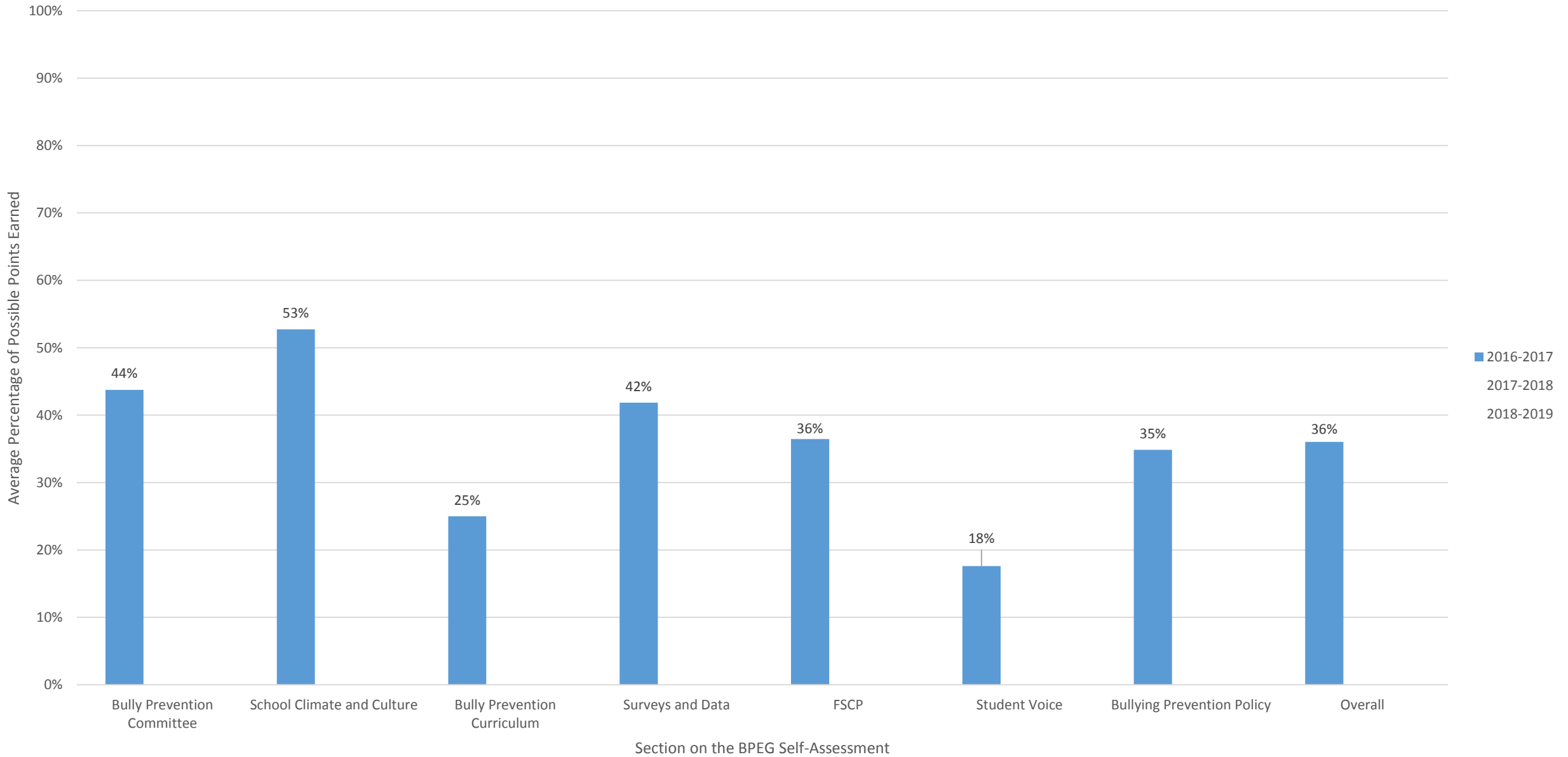
What district are you an Implementation Coach for? *

Test LEA

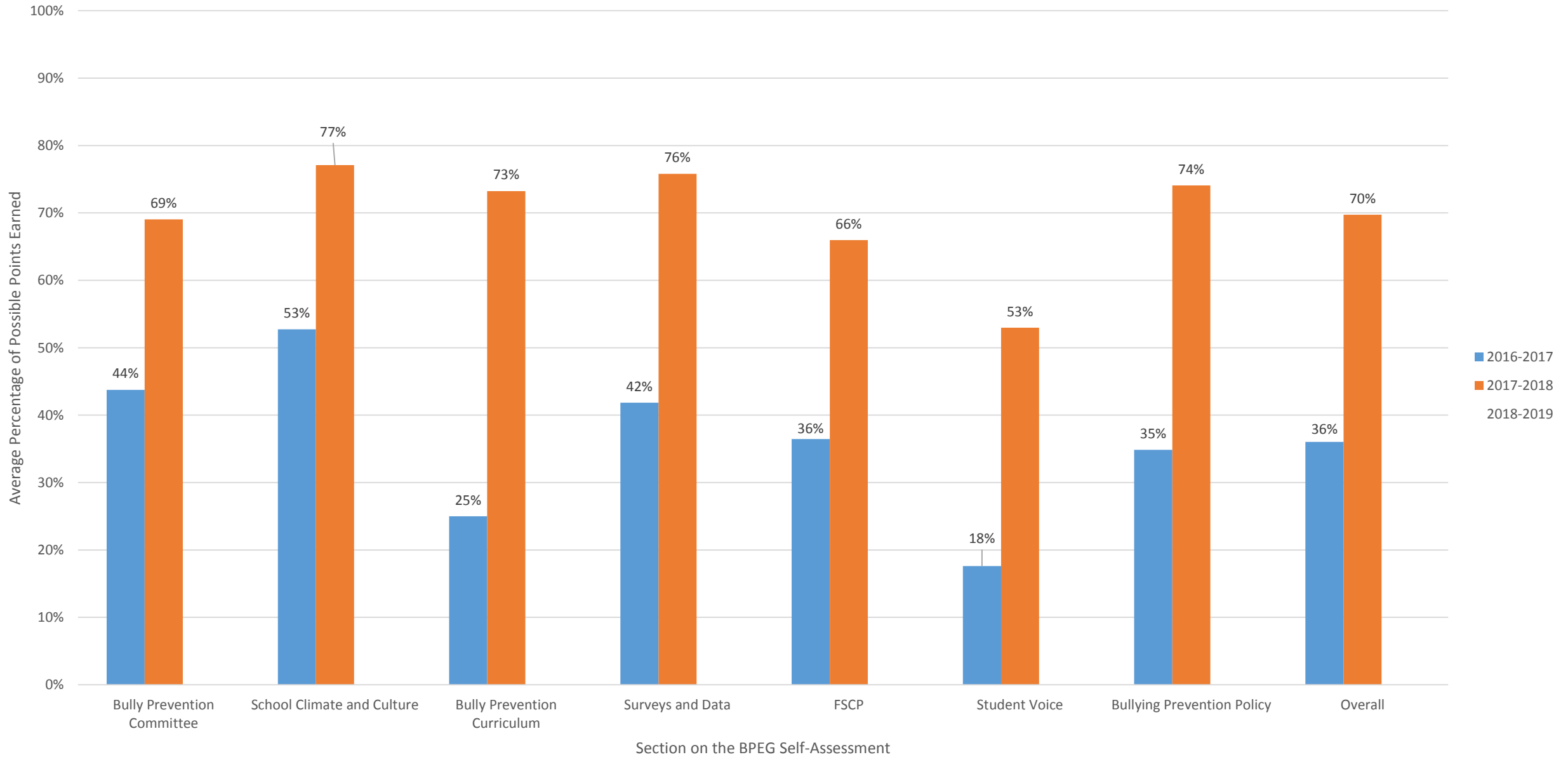
What school are you completing this Self-Assessment for? *

Test School

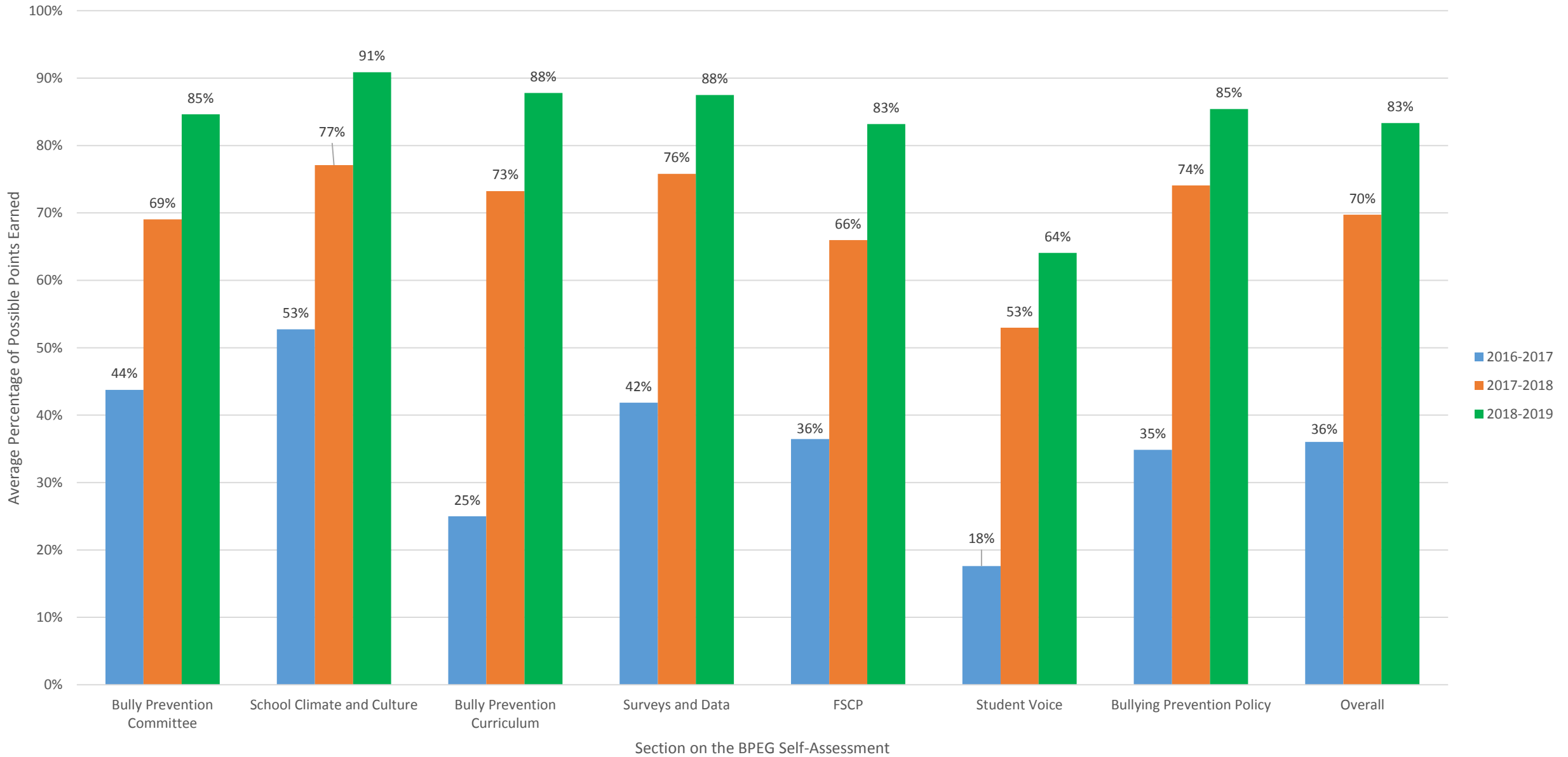
Average BPEG Self-Assessment Scores Over Time



Average BPEG Self-Assessment Scores Over Time



Average BPEG Self-Assessment Scores Over Time



Improvement in BPEG Self-Assessment

Data collected from student, staff, and parent surveys are used for goal setting.

↑ 62%

The school has a parent education program that addresses bullying prevention best practices and how to support their children if they're involved in bullying.

↑ 66%

80% or more of school personnel have committed to reducing bullying and improving overall school safety.

↑ 71%

Bullying incident data other than an annual survey are collected and regularly used to evaluate the effectiveness of the bullying prevention efforts.

↑ 81%

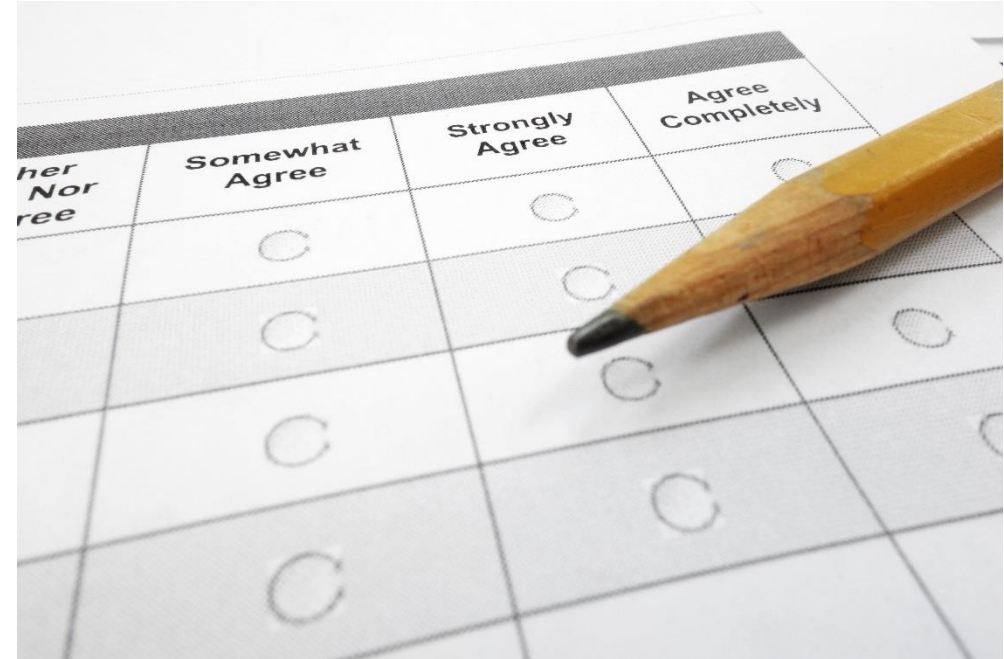
Student Survey Data

11,433

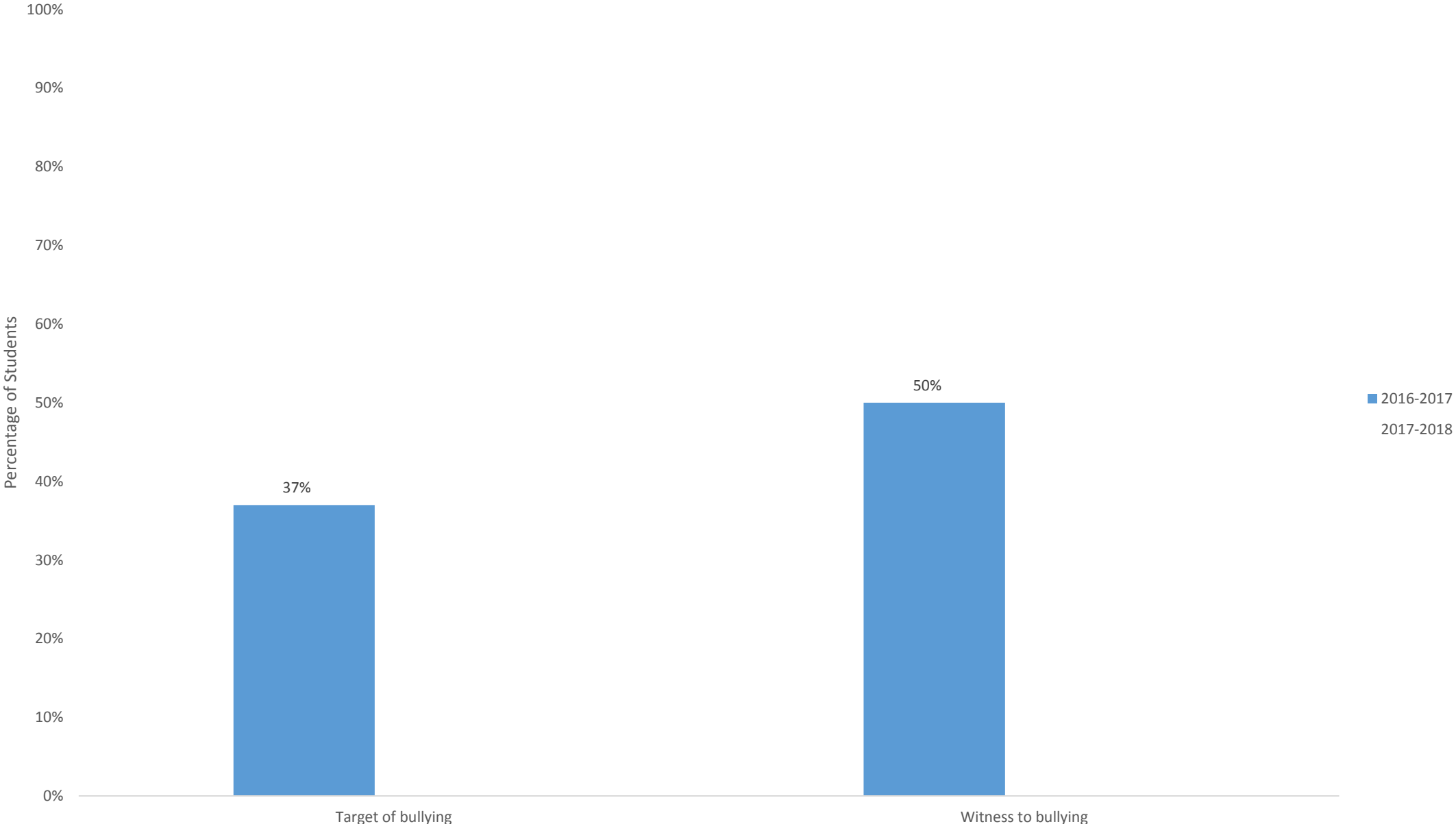
Students surveyed in 2017

12,379

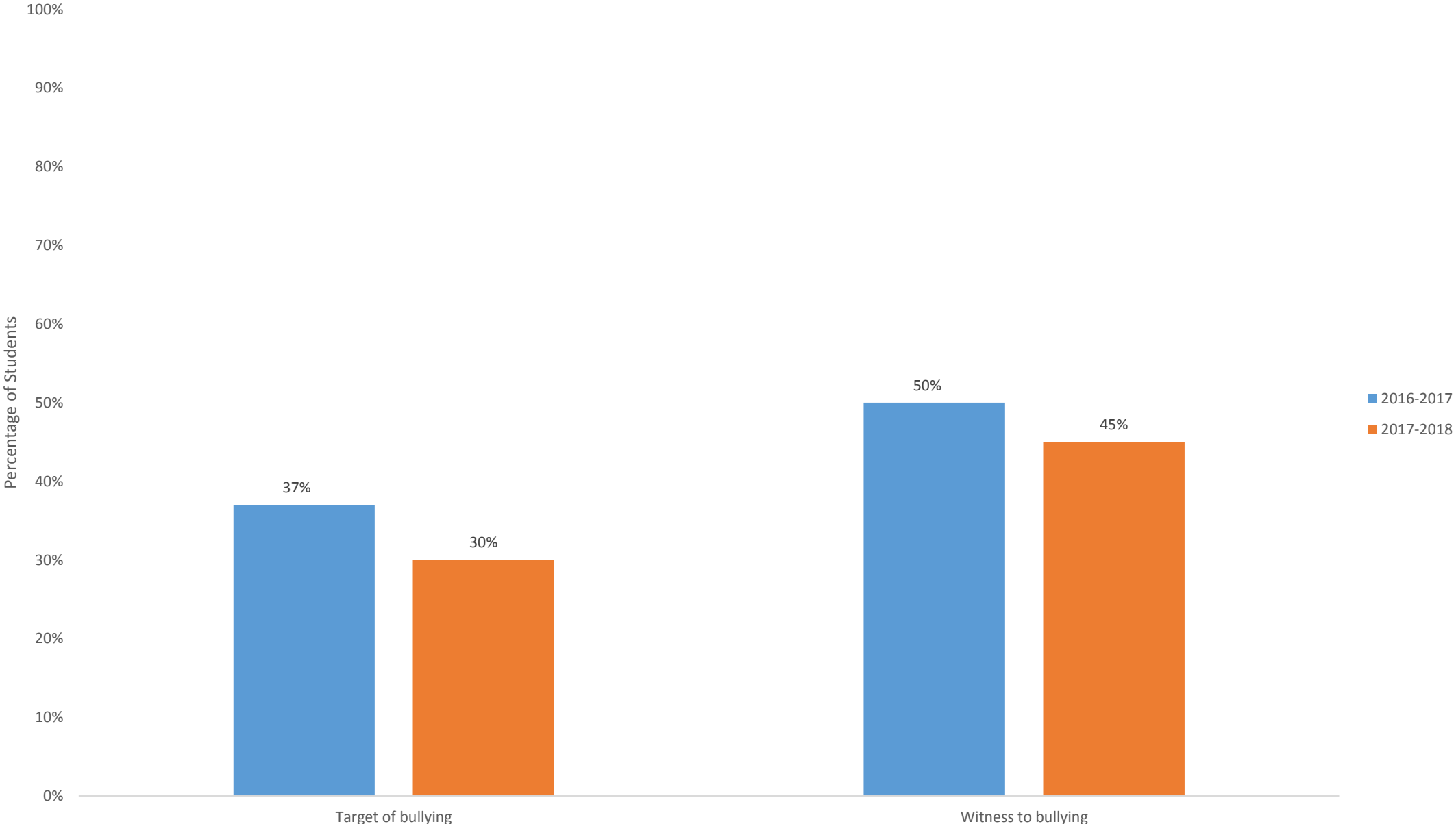
Students surveyed in 2018



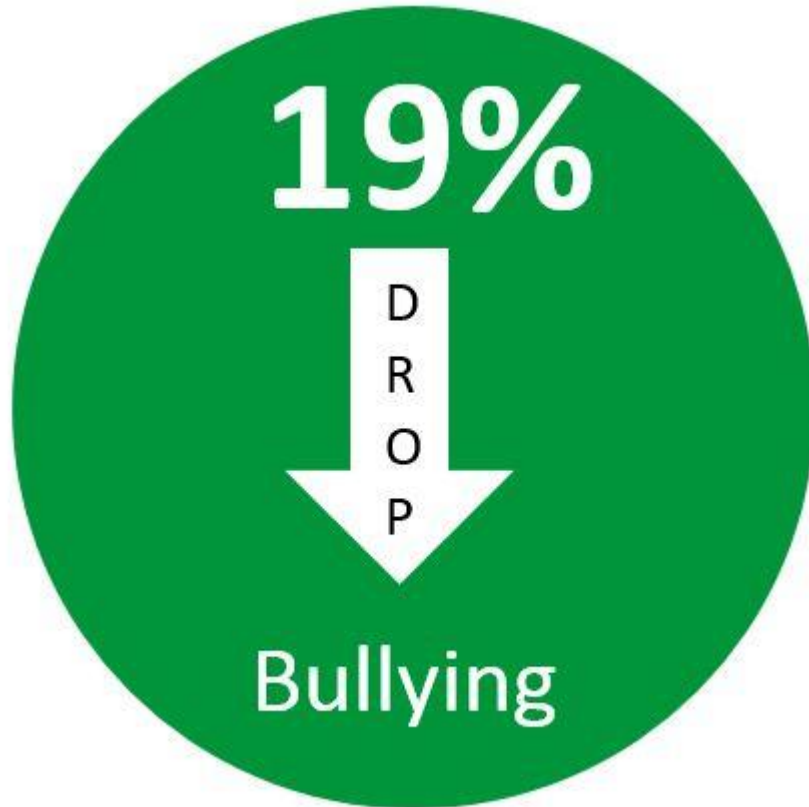
Change in Reported Bullying Behaviors in BPEG Schools



Change in Reported Bullying Behaviors in BPEG Schools



Student Survey Data



Cohort 2 by the Numbers

29 Applications

154 Schools

\$10.8 Million in Requested Funding

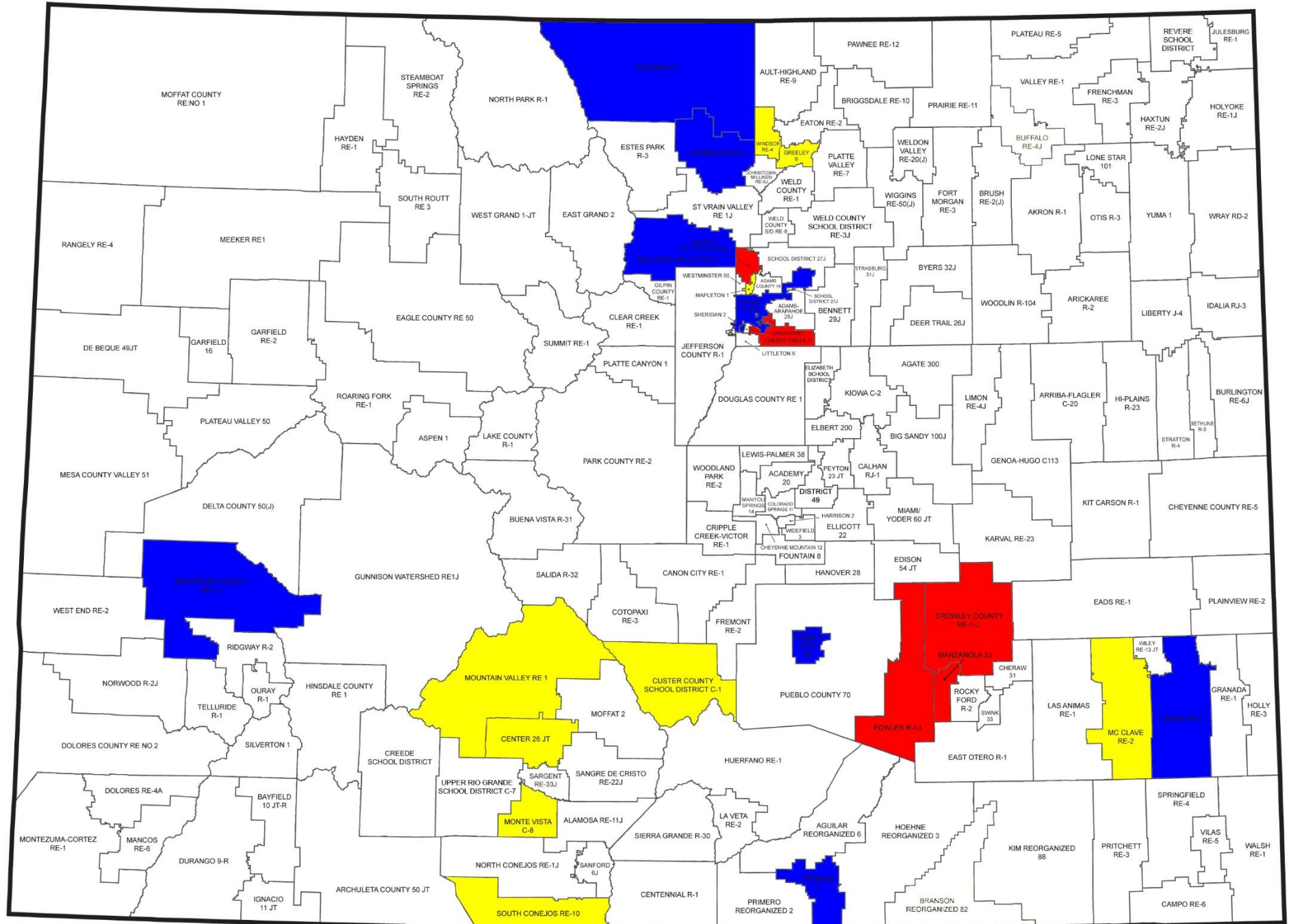
\$5.7 Million in Available Funding

Colorado School District Map

Red
Cohort 1 Only
Districts

Yellow
Cohort 2
Only Districts

Blue
Cohort 1 & 2
Districts



Cohort 2 Updates

Updated Google Dashboard

Cohort 2 Updates

Updated Google Dashboard

Quarterly Webinars



BPEG Webinar Dates

- August 21, 2019
- November 13, 2019
- January 29, 2019
- March 18, 2019

All webinars are 2PM-3PM

Cohort 2 Updates

Updated Google Dashboard

Quarterly Webinars

Kickoff and Symposium Dates

2019 BPEG Kickoffs

September 30, 2019

Adams 12 Conference Center
Thornton, CO

Or

October 21, 2019

Pueblo Community College
Pueblo, CO



Ashawnty's Law

- Named for Ashawnty Davis
- Tasks CDE with creating a model bullying prevention and education policy for districts
 - Not mandated
- CDE partnering with CSSRC, CASB, CASE, Rural Alliance and others
- Posted online by July 1, 2019