

A photograph on the left side of the slide shows a woman and a young child working together in a garden. The woman, with her hair in a ponytail, is leaning over and using a small green-handled tool to work the soil. The child, wearing a light blue shirt, is also focused on the task. The background is softly blurred, showing more of the garden and some greenery.

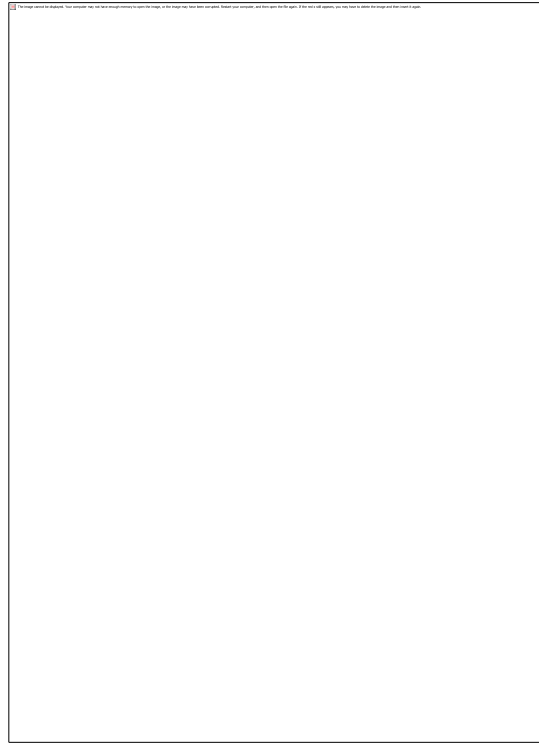
***growing community*** –  
one urban garden at a time

# Gardens on School Grounds – what does this look like at your school?



School Garden

School-Based Community Garden



# Assessing School & Community Readiness

When a group of dedicated community members come to consensus that a garden complements their vision for their neighborhood, the community must assess its own readiness to support and sustain a community garden. This requires a community to affirm that there is:

- 1) a critical mass of committed participants
- 2) broad-based support
- 3) agreement from the participants on the need for the garden and the multiple purposes it may serve
- 4) an available, sustainable, long-term site



# Establishing a School-Based Community Garden

1. Involve **Neighbors** & Volunteers

2. Form a Planning Committee

3. Identify Resources

4. Agree on Ground Rules

5. Select the Site

6. Secure the Site

7. Develop a Design

8. Prepare the Site

9. Maintain the Garden

**10. Engage the Community**

11. Enjoy the Harvest

**12. Spread the Word**

# Asset Based Community Development (ABCD)

ABCD is a process by which neighborhood regeneration can be achieved by locating all of the available local assets and connecting them with one another in ways that multiply their effect.

*Evidence suggests that real community development takes place only when local people are committed to investing themselves and their resources.*



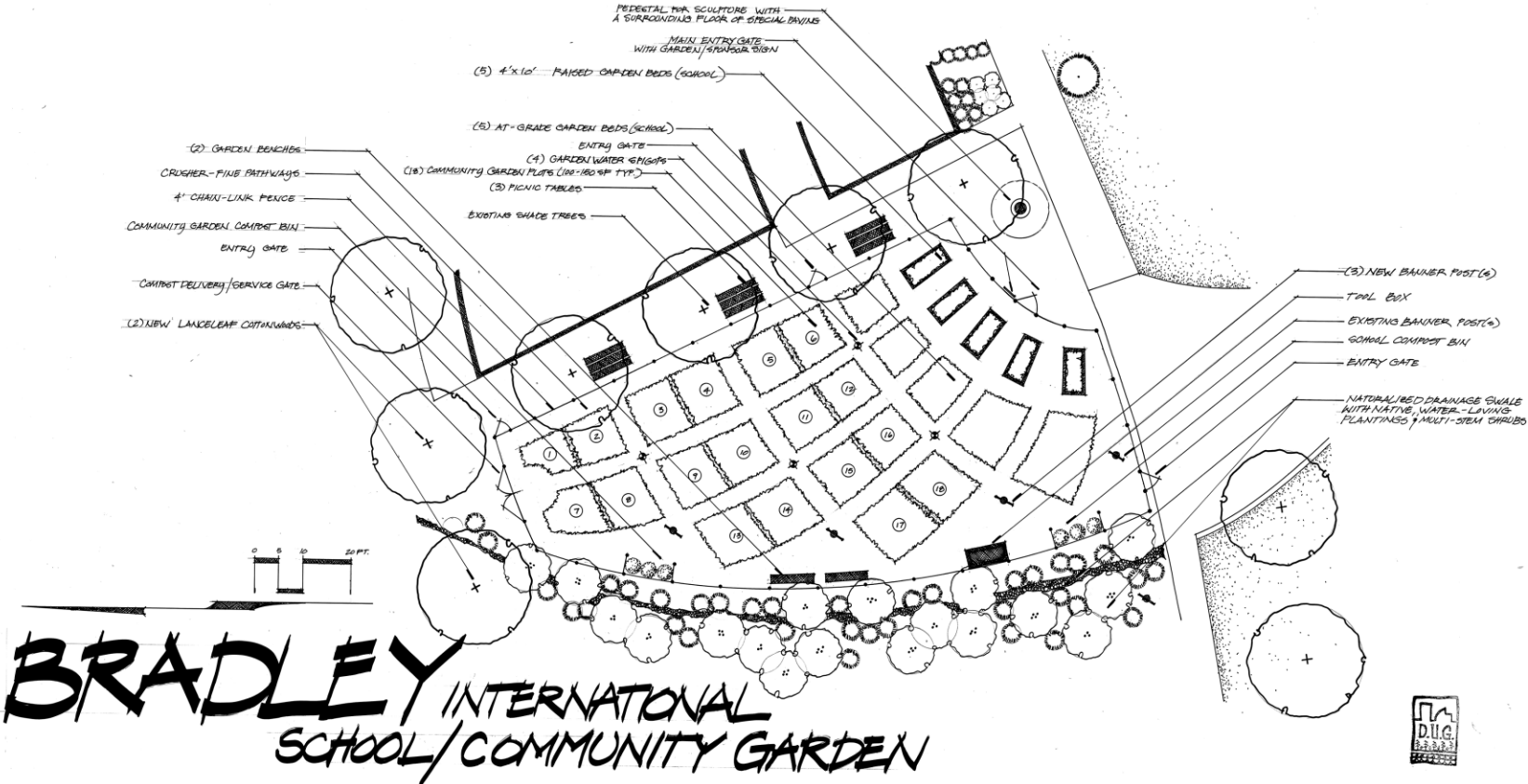


## Additional **Considerations** for Establishing a Garden on School Grounds

- Primary purpose for the garden
  - Site-specific elements
- Broad support and community ownership

# Additional Considerations for Starting Community Gardens

- Site planning
- Design considerations

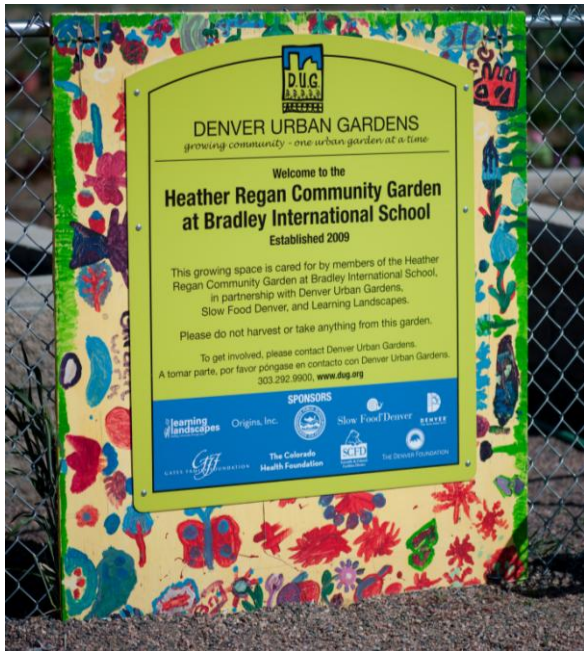




## Additional **Considerations** for Starting Community Gardens

- Garden organization and leadership





# Sustainability of Gardens on School Grounds

- Build the garden into the culture of school
  - Plan for long term use of the site
    - Take your time
  - Encourage ownership of the garden
- Develop a diverse leadership committee
- Engage the community as volunteers



## Benefits of Gardening at School

- provide an opportunity for **experiential learning**
- promote **healthy eating and active living** as life values
- engage **community** as a valuable resource
- encourage community **health and stability**
- enhance the **school environment**

# Determining Garden Priorities

- Basic horticulture knowledge
- Culinary education
- Academics— science, math, literacy, etc.
- Arts programming
- Community building
- Food access
- Health & wellness
- Demonstration site
- Policy change



# Integrating the Garden

## During the school day

- Existing lessons
- Cafeteria



# Integrating the Garden

## Out of school hours

- Afterschool garden clubs
- Summer garden clubs
- Youth Farmers' Markets
- School events



# Curriculum Connections

## Health



## Science



# Denver Urban Gardens' Gardening and Nutrition Curriculum

## Cooking



## Literacy



# Curriculum Resources

- Denver Urban Gardens
  - [www.dug.org/school-garden-curriculum](http://www.dug.org/school-garden-curriculum)
- Slow Food Denver
  - <http://www.sfdseedtotable.org/resources/>
- JeffCo Garden Curriculum
  - <http://pub.lucidpress.com/Jeffcogardencurriculum/>