



Community Clothing Exchange

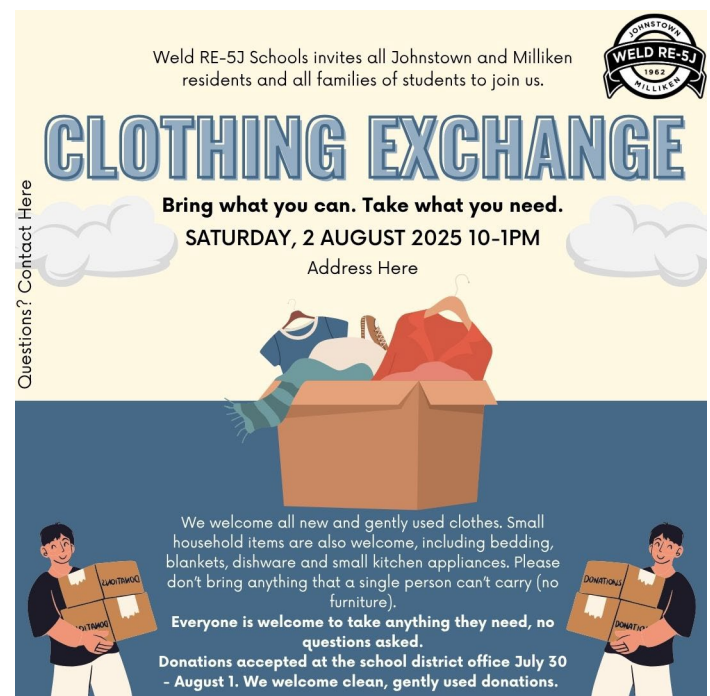
Weld Re-5J School District

Submitted by Alexandra Ham, alexandra.ham@weldre5j.org

To support families who face financial challenges, Weld RE-5J created a Community Clothing Exchange event. The goal was to rehome clean, gently used clothing and small home supplies such as bedding, bathroom essentials, and kitchen items rather than them being donated to a larger company or thrown away.

The Multi-Tiered System of Supports (MTSS) Coordinator and Multilingual Learner (ML) Coordinator worked together to plan and implement this event. The ML Coordinator called Spanish speaking families to personally invite them.

The theme of the event was "Bring what you can. Take what you need". The event took place in a large room at the district office. Clothing was laid out on tables or hung up on racks and sorted by gender and size. Families were invited to shop at any point in a four-hour window. Donations were accepted for 1 week prior. Families were incredibly grateful for the opportunity to share items with each other, shop for needed supplies, and generally support their neighbors. Many people called in the weeks after asking if donations were still being accepted and when the next event would be. This event contributed to a positive district climate and positive student outcomes by providing needed supplies to families in a way that maintained their dignity. Everyone who shopped brought something to donate, and many people donated without shopping.



No official evaluation took place at the first event. The response was overwhelming and positive. At the next event, Weld RE-5J will evaluate how many donations are made and track how many families shop. Challenges included more donations than expected, which was difficult to manage; organizers needed more space, more volunteers, and a better way to sort the donations.

Social media was helpful to get the word out, but personal phone calls inviting families in need was most effective. Advice for others is to have the invite come from someone families already have a relationship with.