

Welcome to the Overview of the At-Risk Interchange File

Agenda Summary

- Purpose of the At-Risk Interchange
- At-Risk Interchange Website & File
- Data Pipeline
- Syncplicity
- Resources
- Questions

AI bots will be ejected from the meeting.
The webinar will begin 2 minutes after the hour.
[PPT and other resources](#) are available for download.

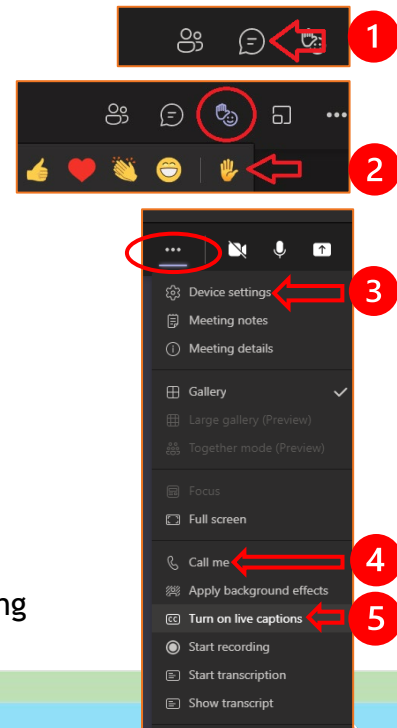
Using Teams

Participants are muted; to ask a question, use the top menu to either:

1. Ask in the chat
2. Raise your hand to ask to be unmuted

For audio issues, click on the “3 dots” menu and either:

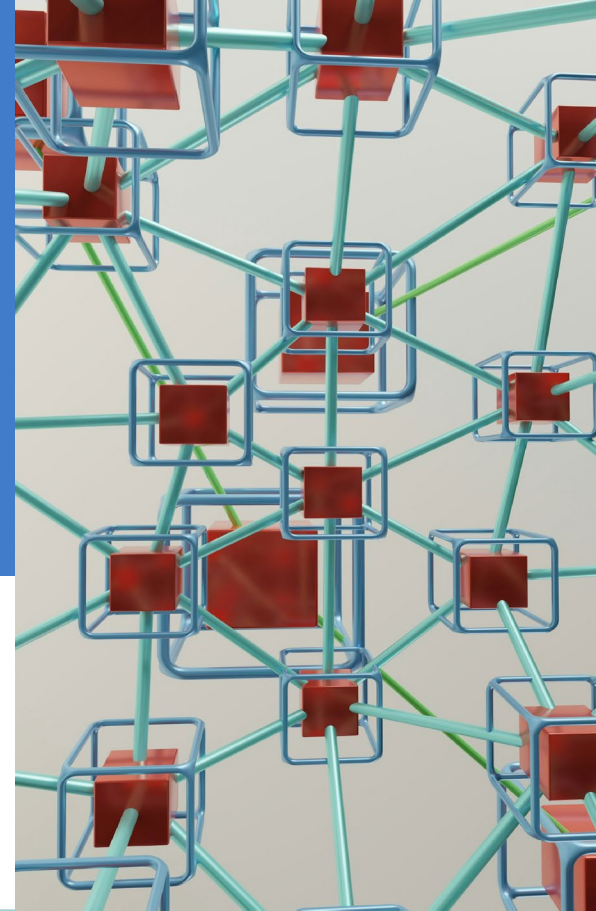
3. Check your device settings
4. Click “Call me” and enter your phone # - Teams will ring your phone
5. Turn on automated live captioning





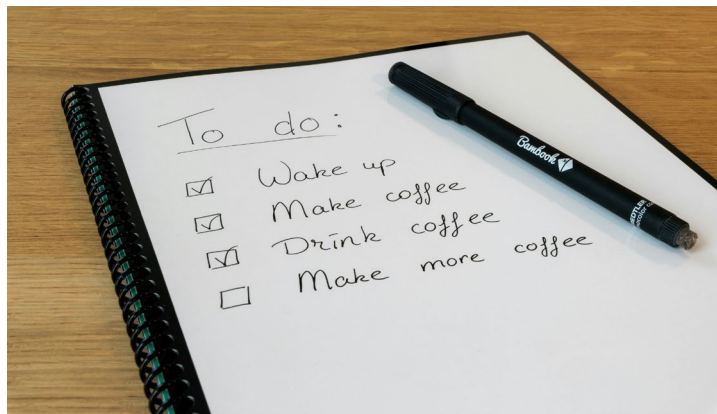
August 21, 2025

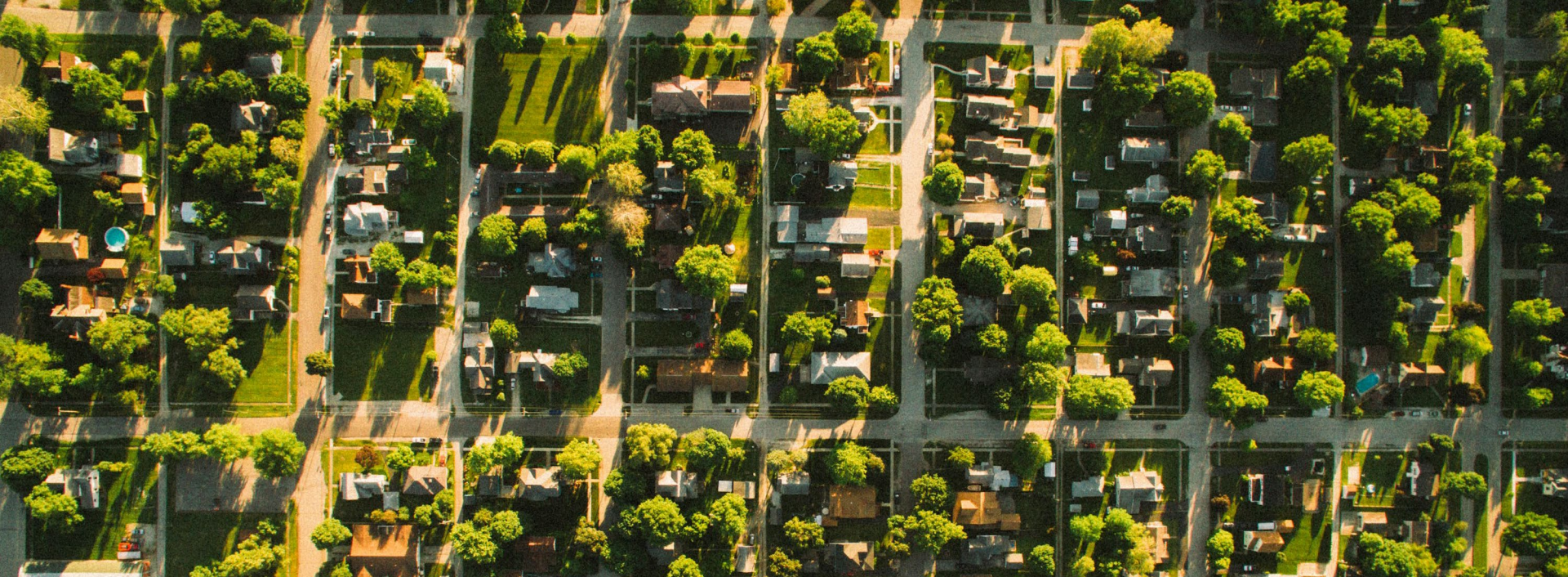
Overview of the At-Risk Interchange File



Agenda

- Purpose of the At-Risk Interchange
 - HB25-1320
 - Student October Count
- At-Risk Interchange Website
 - Preview
- At-Risk Interchange File
- Data Pipeline
 - Preview
- Syncplicity
- Resources
- Questions





Purpose of the At-Risk Interchange



HB25-1320: School Finance Act

“Improved” At-Risk Measure

- Removes all references to the “new” At-Risk Measure
- Mandates collection of student-level Census block data for the 2025-2026 SY
 - Comply w/this mandate by submitting the At-Risk Interchange file
- Allows the State Board of Education to choose pausing/starting the collection of Census block data on a year-by-year basis

Census Block Data:

4 Components

1. State Code
2. County Code
3. Tract Code
4. Block Code

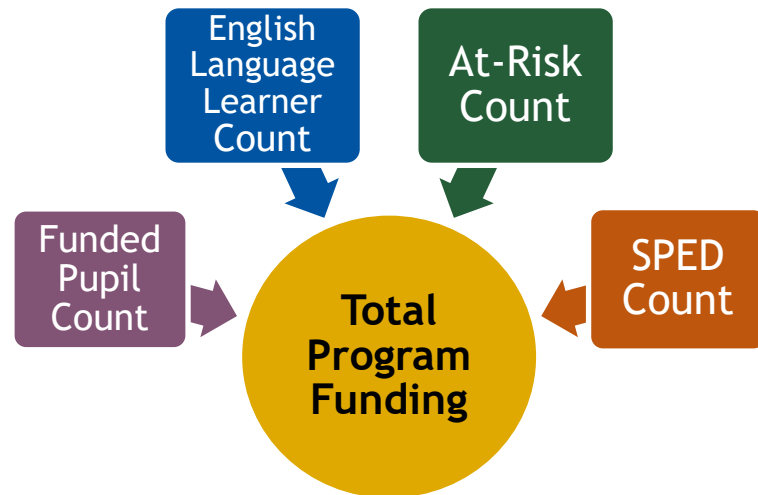
All 4 components together assign an address a specific, unique coding pattern

- Piecemealing components together most likely will result in an inaccurate Census block data
- It's possible to have many combinations with the same tract and block codes within the same county code



At-Risk Count vs. At-Risk Interchange

- School districts in Colorado are funded by a variety of sources. The amount a district receives according to the School Finance Act is called Total Program Funding.
- Counts from the Student October Count data submission are used to calculate Total Program Funding through a funding formula.
- The At-Risk Count is part of the funding formula and includes data from the Student Demographic file
 - Free/Reduced Lunch Eligible field (A.K.A. FRL eligibility or at-risk eligibility)
- **Data from the At-Risk Interchange is not currently included in the funding formula; however, the Interchange was created in anticipation for potential future inclusion.**



Student October Snapshot

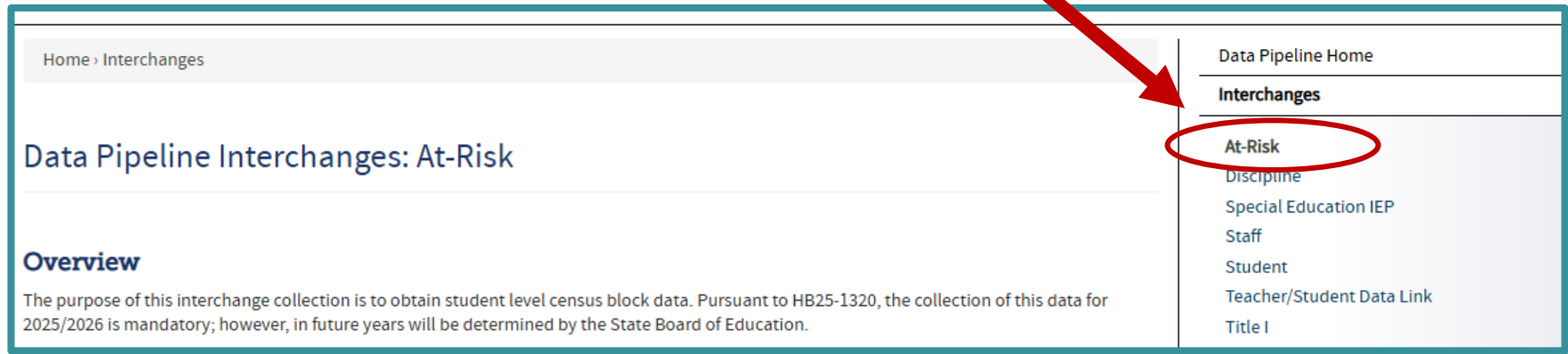
- Districts must upload Census block data for every student included in their Student October Snapshot.
- If data is missing for a given student, this will trigger a Student October Snapshot error:
 - **Error: OC200** - This student is currently missing from your district's At-Risk Interchange File. Please add this student's record to the At-Risk Interchange data and take a new Student October Snapshot.

A close-up, shallow depth-of-field photograph of a person's hands typing on a silver laptop keyboard. The person is wearing a grey long-sleeved shirt. The laptop screen is on the left, showing a document with a menu bar at the top containing 'Datei', 'Bearbeiten', 'Ansicht', 'Einfügen', 'Format', 'Fenster', and 'Hilfe'. The background is blurred, showing another computer monitor and a desk. A semi-transparent purple banner is overlaid across the middle of the image, containing the text 'At-Risk Interchange Website' in white serif font.

At-Risk Interchange Website

Data Pipeline: At-Risk Interchange Website

The [At-Risk Interchange website](#) is a one stop shop for anything related to the interchange, file, and trainings.



Home › Interchanges

Data Pipeline Interchanges: At-Risk

Overview

The purpose of this interchange collection is to obtain student level census block data. Pursuant to HB25-1320, the collection of this data for 2025/2026 is mandatory; however, in future years will be determined by the State Board of Education.

- Data Pipeline Home
- Interchanges**
 - At-Risk**
 - Discipline
 - Special Education IEP
 - Staff
 - Student
 - Teacher/Student Data Link
 - Title I

Data Pipeline:

At-Risk Interchange Website, cont.

The first half of the [At-Risk Interchange website](#) has information related to Deadlines, File Layout, Business Rules, and File Template.

Deadlines

The At-Risk Interchange will open July 16th, 2025 and close on November 10th, 2025. This interchange will only be available during the Student October Collection.

- [2025-2026 At-Risk Interchange File Timeline \(PDF\)](#)

File Layout and Definitions

- [2025-2026 At-Risk Interchange File Layout \(PDF\)](#)

Business Rules

- [2025-2026 At-Risk Interchange Business Rules \(XLSX\)](#)

Templates

- [2025-2026 At-Risk Interchange File Template \(XLSX\)](#)



Data Pipeline: At-Risk Interchange Website, cont. 2

The second half of the At-Risk Interchange website has information related to Training, Additional Resources, Internal CDE Resources, and an email contact for At-Risk Measure support.

Training

Mark your calendars and register for the following collection training opportunities:

- **Overview of the At-Risk Geocoding Tool** (July 31, 2025, 1 PM)
 - [Overview of At-Risk Geocoding Tool Presentation Slides \(PDF\)](#)
 - [Overview of At-Risk Geocoding Tool \(Recording\)](#)
- **Overview of the Data Pipeline At-Risk Interchange File**
 - [August 21, 2025 \(10 AM\) Registration Link](#)
- **Office Hours: Census Geocoder Tool Deep Dive (Live Demonstration)**
 - [August 27, 2025 \(1PM\) Registration Link](#)
- **Office Hours: Tools to Validate Addresses for Census Block Data Collection**
 - [September 9, 2025 \(1PM\) Registration Link](#)
- **Office Hours: Questions from the Field: Live Q & A**
 - [October 9, 2025 \(1PM\) Registration Link](#)

Additional Resources

- [Instructions for Using the Census Geocoder Tool \(PDF\)](#)
- [Valid Census Block Data Combinations \(XLS\)](#)

Internal CDE Resources

- [School Auditing Office At-Risk Count Webpage](#)

Contact: At-Risk Measure



A photograph taken from inside a building, looking out through a large glass door. The view outside shows a paved walkway leading to a multi-story building with red and white walls. There are several trees, including palm trees, and some street lamps in the courtyard. The interior of the building has a tiled ceiling and a polished floor.

Preview: At-Risk Interchange Website



At-Risk Interchange File

Data Fields

- The interchange file has six required data fields
 - Reporting School District Code
 - Student State ID (SASID)
 - **State Code**
 - **County Code**
 - **Tract Code**
 - **Block Code**
- The state, county, tract, and block codes create unique **combinations of data** specific to a student's **primary physical residential address**. Districts should have a process of storing these fields together.

Notes on Obtaining Census Block Data

- County codes associated with Census block data (three digits) will not be the same as the county codes reported in the Student School Association Interchange file (two digits).
- The same tract and block code combinations can appear in multiple counties; therefore, it's imperative **Census data is obtained through a geocoding process** and not piecemealed together from multiple sources.
 - [Overview of the Census Geocoder Tool](#)
 - Office Hours: Census Geocode Tool Deep Dive 8/27 at 1pm
 - [Census Geocoder Tool Instructions](#)
 - Districts using their own geographic information system (GIS) to obtain Census block data should use the most recent Census data available (2020)

Default Coding Patterns

Districts unable to obtain Census block data may use one of the following coding patterns:

Description	State Code	County Code	Track Code	Block Code
Address on File- Did Not Attempt to Obtain Census Block Data: The district has a primary physical address on file but did NOT attempt to obtain census block data using the geocode tool.	08	000	000001	0001
Address on File- No Census Block Data Returned: The district confirmed that the primary physical address is valid using USPS but the geocode tool did not return census block data.	08	000	000002	0002
Confidentiality Program: No census block data was provided because the district has confirmed the student is participating in a confidentiality program.	08	000	000003	0003
No Physical Primary Address on File- Identified Group: The district does not have a valid primary physical address on file and the student is confirmed homeless, migrant, foster child, or attending a detention center	08	000	000004	0004
No Physical Primary Address on File- No Identified Group: The district does not have a valid primary physical address on file and the student is not confirmed homeless, migrant, foster child, or attending a detention center.	08	000	000005	0005
Out of State codes: The district has a primary physical address on file that is not in Colorado	08	000	000006	0806

Business Rules:

Trigger an error if not followed

Data Element	Error Code	Error Type	Message
ARM_COUNTY_CODE	AR06	Error	County Code must be a 3 digit number and is required.
ARM_COUNTY_CODE	AR07	Error	If County Code = '000', then the Tract Code and Block Code must follow one of the Missing Census Block Data coding patterns described on the file layout.
BLOCK_CODE	AR09	Error	Block Code must be a 4 digit number and is required.
DISTRICT_CODE	AR01	Error	District Number is invalid.
DISTRICT_CODE	AR02	Error	District Code on file must match reporting district code on file upload screen. Please select the correct district code when uploading this file.
SASID	99999	Error	The SASID is invalid or name, birth date, or gender does not match what is in the RITS system for the entered SASID.
SASID	AR03	Error	SASID duplicates not allowed. *[Will cause significant issues with your Student October Snapshot]
SASID	AR04	Error	The SASID must be a 10 digit number.
SASID	AR10	Error	SASID is mandatory.
STATE_CODE	AR05	Error	State Code must be a 2 digit number ('08' only) and is required. Please refer to the At-Risk Interchange File Layout for out of state student coding.
TRACT_CODE	AR08	Error	Tract Code must be a 6 digit number and is required.
TRACT_CODE	AR11	Error	The submitted census block data (State Code, County Code, Tract Code, and Block Code) are not a valid combination. The submitted combination is not a valid census block location. Refer to the At-Risk Interchange Data Pipeline



Preview: At-Risk Interchange File



Data Pipeline: Upload/Extract Files & Error Reports

Uploading the File to Data Pipeline

- Navigate to the [Data Pipeline Webpage](#) and login
- Find “File Upload” on the lefthand menu
 - Click “Data File Upload”
 - **Dataset:** At Risk Measure Interchange
 - **File Type:** At Risk Measure Interchange
 - **School Year:** 2025-26
 - **Organization/LEA:** [Your district]
 - **Locate File:** Choose File
 - **Upload Type:** Replace
 - Click “Submit”

Extracting from Data Pipeline

- Purpose: Obtain last year's data or to work with what you have for this year already
- Navigate to the [Data Pipeline Webpage](#) and login
- Find “At Risk” on the lefthand menu
 - Click “File Extract Download”
 - **File Type:** At Risk Measure Interchange
 - **School Year:** [Choose]
 - **Organization/LEA:** [Your district]
 - **Batch ID:** All [or may prepopulate]
 - **Extract Type:** At-Risk Extract
 - **File Content Type:** [Choose]
 - **Records Edited Online:** [All Records]
 - Click “Download Standard Extract”

Data Pipeline Error Report

- Navigate to the [Data Pipeline Webpage](#) and login
- Find “Pipeline Reports” on the lefthand menu
 - Click “Error Report”
 - **Dataset:** At Risk Measure Interchange
 - **File Type:** At Risk Measure Interchange
 - **School Year:** 2025-26
 - **Organization/LEA:** [Your district]
 - **Error Type:** Errors and Warnings
 - Errors must be corrected
 - Warnings need investigation but could be okay
 - Click “Search”
- Match error codes with those found on the At-Risk Interchange [Business Rules](#) to troubleshoot



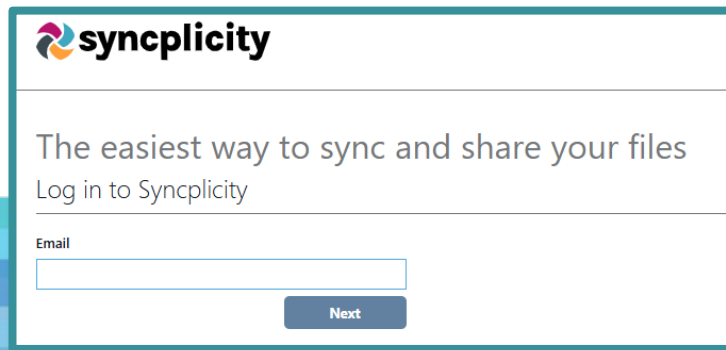
Preview: Data Pipeline




SOS: Syncplicity

Syncplicity Folders

- [Syncplicity](#) is CDE's secure file sharing service of choice.
- Syncplicity folders can be used to share files containing PII between the district and CDE when districts need help with the At-Risk Interchange or the Census Geocoder tool.
- Information from last year is still in your district's folder. Remember to use an identifier for information that is specific to this year, such as "25-26 Awesome District Interchange File."

A screenshot of the Syncplicity login page. At the top left is the Syncplicity logo, which consists of a colorful circular icon followed by the word "syncplicity" in a sans-serif font. Below the logo, the text "The easiest way to sync and share your files" is displayed in a medium-sized font, followed by "Log in to Syncplicity" in a smaller font. A horizontal line separates the text from the login form. The form includes a label "Email" to the left of a text input field. Below the input field is a blue button with the word "Next" in white text.

 syncplicity

The easiest way to sync and share your files

Log in to Syncplicity

Email

Next



Syncplicity Users

- Syncplicity folders have been shared with individuals assigned the ARM LEAUSERS and LEAVIEWERS roles within IDM. The folder naming convention is:
 - District Code_ District Name_ ARMeasure Interchange
- If you have been assigned the user or viewer role for this interchange file, and this folder has not been shared with you, email ARMeasure@cde.state.co.us.
 - Folders are shared with email addresses in IDM; if you have a Syncplicity account established under another email address, you may not see this folder when you're logged into Syncplicity.

Syncplicity Visuals



Department of Education

Activity Feed Files Shared Links Install Account

Files

All Files > 0010_Mapleton 1_ARMeasure Interchange

Cloud Sync Folder Checkmark Trash

<input type="checkbox"/>	Name ▲	Date modified	Type	Size
<input type="checkbox"/>	 Census Block Data	--	Owner	--
<input type="checkbox"/>	 Interchange File	--	Owner	--



Resources



Resources: CDE & Others

Census Geocoder Tool

- Training
 - Overview of the At-Risk Geocoding Tool [Slide Deck](#)
 - Office Hours: Census Geocoder Tool Deep Dive (Live Demonstration) 8/27 (1PM)
 - Office Hours: Tools to Validate Addresses for Census Block Data Collection 9/09 (1PM)
 - Office Hours: Questions from the Field: Live Q & A 10/09 (1PM)
- [Census Geocoder Tool Instructions](#) (CDE)
- [Census Geocoder User Guide, FAQ, etc.](#) (Census)

Data Pipeline

- [At-Risk Interchange Website](#)
- [Identity Management webpage](#)

At-Risk Measure Support: ARMeasure@cde.state.co.us





Questions

