

Transitioning from Early Intervention

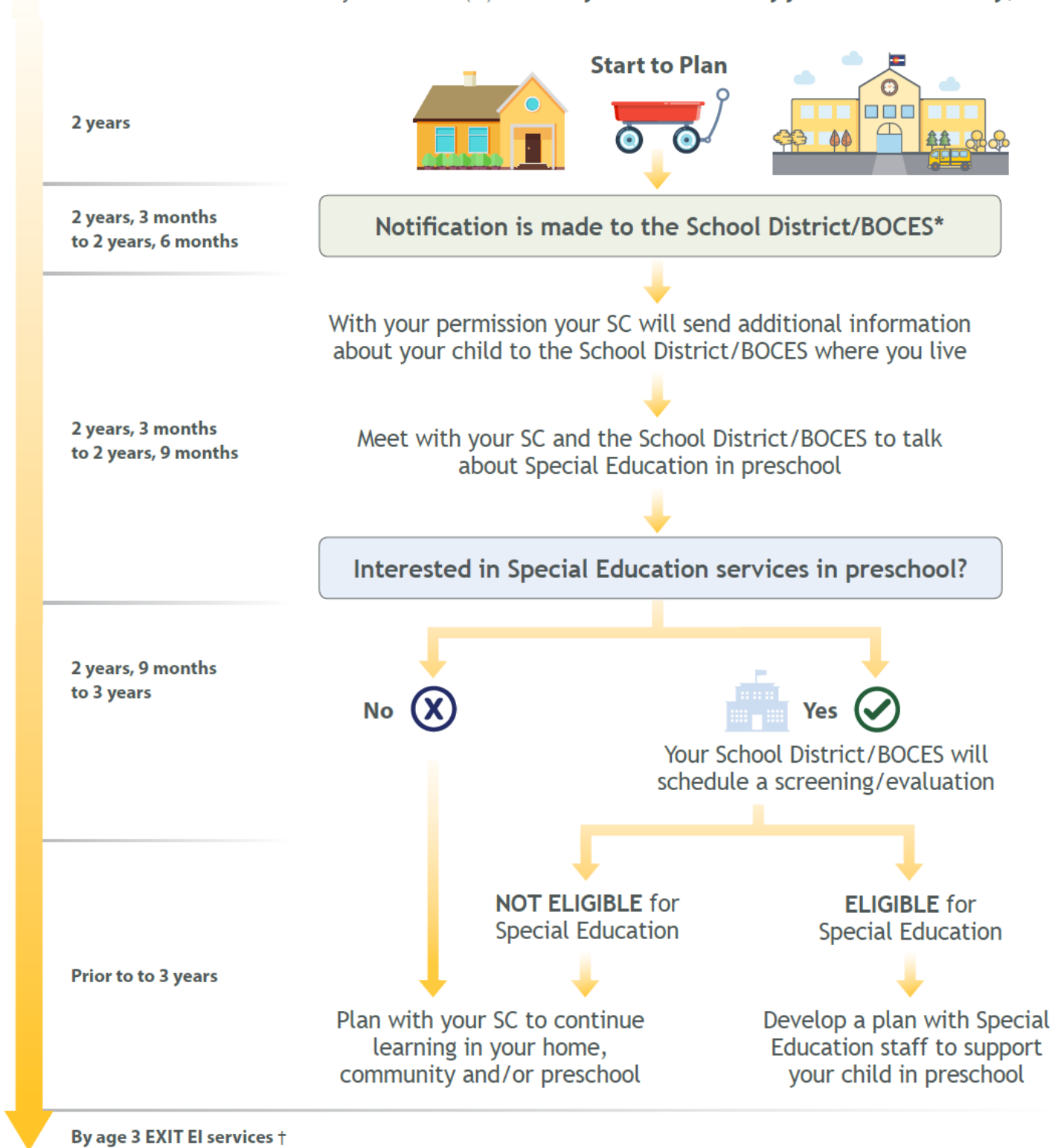
Service Coordinator (SC) Contact Info

Name: (First, Last)	
Phone:	Email:

School District/BOCES Contact Info

Name: (First, Last)	
Phone:	Email:

Your Service Coordinator (SC) will work with you on a transition plan to ensure your child receives supports and services based on their needs after Early Intervention (EI) ends. *Early Intervention ends by your child's 3rd birthday†*



* Board of Cooperative Educational Services
 † Unless qualifying for the Extended Part C Option