



**COLORADO**  
Department of Education

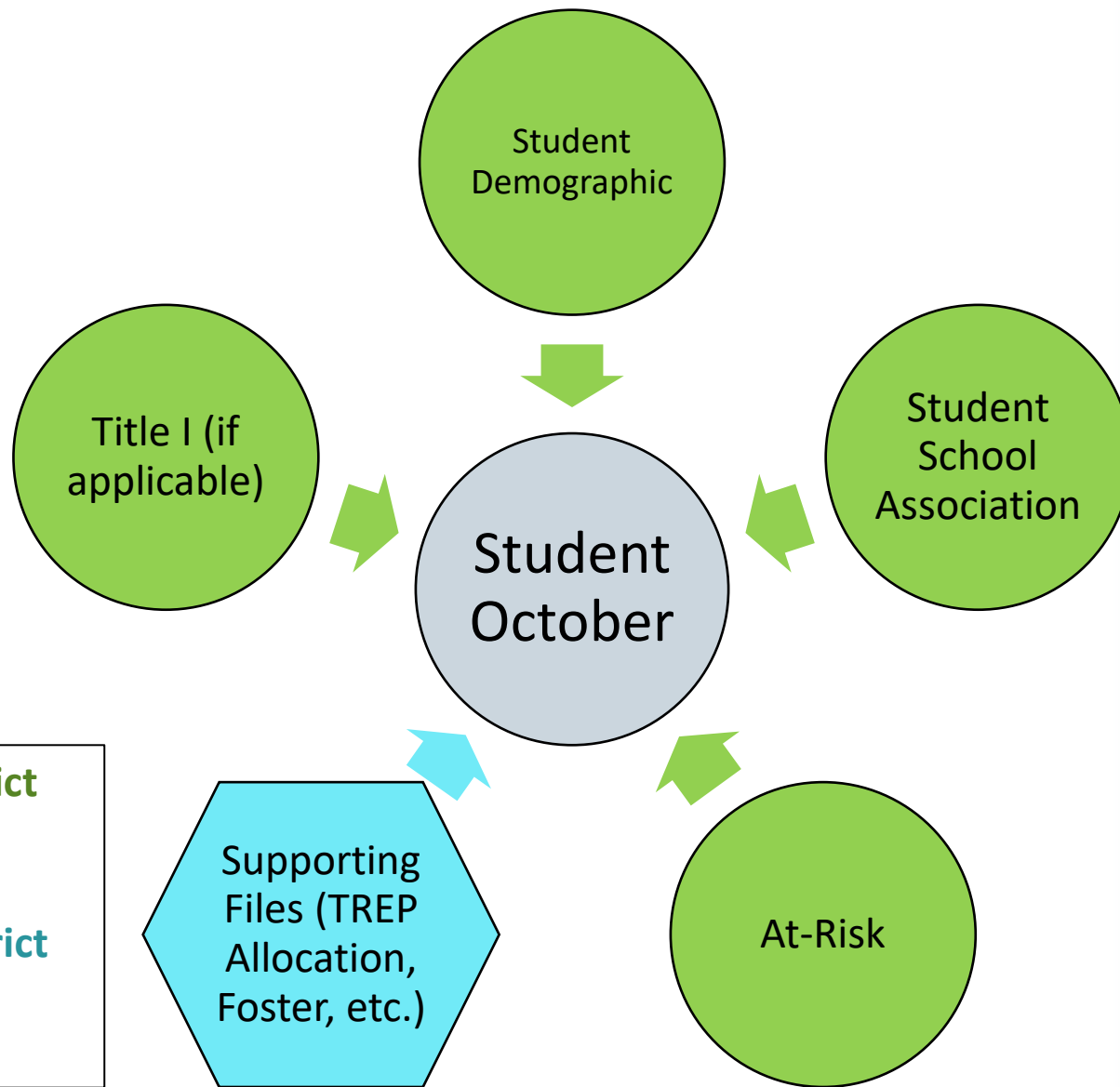
---

# 2024-2025 At-Risk Interchange Office Hours

September 11, 2024

- To obtain **student-level census block data** needed to implement the [new at-risk measure](#) as described in [HB22-1202](#).
- As provided for under [SB24-188](#), data needed for the implementation of this measure will be collected beginning with the 2024-25 school year.
- In the 2025-26 school year, the new at-risk measure will be fully implemented and included in the Total Program funding calculation as described in the Public-School Finance Act which will continue to utilize student-level data reported through the Student October Count data collection.

- For the 2024-2025 school year, data collected through the At-Risk Interchange will be included in the Student October Snapshot only.
- Districts must upload this data for every student included in its Student October Snapshot. If data is missing for a given student, this will trigger a Student October Snapshot error.
  - Error: *OC200 - This student is currently missing from your district's At-Risk Interchange File. Please add this student's record to the At-Risk Interchange data and take a new Student October Snapshot.*



- **Light Green Circles – District Uploads**
- **Gray – CDE Uploads**
- **Light Blue Hexagon – District “Triggers”**

# Syncplicity Folders





- Syncplicity folders have been shared with individuals assigned the ARM LEAUSERS and LEAVEWIERS roles within IDM. The folder naming convention is:
  - District Code\_ District Name\_ ARMeasure Interchange
- These folders can be used to share files containing PII between the district or BOCES and CDE when requesting assistance with the At-Risk Interchange or Census Geocoding tool.
  - Syncplicity is CDE's secure file sharing service of choice
- If you have been assigned the user or viewer role for this interchange file and this folder has not be shared with you, email [ARMeasure@cde.state.co.us](mailto:ARMeasure@cde.state.co.us).
  - Folders are shared with email addresses in IDM; if you have a Syncplicity account established under another email address, you may not see this folder when you're logged into Syncplicity.





Department of Education | Activity Feed | Files | Shared Links | Install | Account

## Files

All Files ▸ 0010\_Mapleton 1\_ARMeasure Interchange

<input type="checkbox"/>	Name ▲	Date modified	Type	Size
<input type="checkbox"/>	 Census Block Data	--	Owner	--
<input type="checkbox"/>	 Interchange File	--	Owner	--



# At-Risk Interchange Website: Resources





## At-Risk Interchange Website

Home > Interchanges

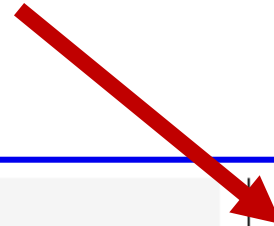
### Data Pipeline Interchanges - At-Risk

---

#### Overview

The purpose of the At-Risk Interchange is to obtain student-level census block information needed to implement the new at-risk measure as described in HB22-1202. As provided for under SB24-188, data needed for the implementation of this measure will be collected beginning with the 2024-25 school year. In the 2025-26 school year, the new at-risk measure will be fully implemented and included in the Total Program funding calculation as described in the Public-School Finance Act which will continue to utilize student-level data reported through the Student October Count data collection. As part of this legislation, the new at-risk measure will take into consideration the following:

- Data Pipeline Home
- Interchanges**
- At-Risk
  - Discipline
  - Special Education IEP
  - Staff
  - Student
  - Teacher/Student Data Link
  - Title I
- Snapshots
- Year-Round Collections





## Data Pipeline Interchanges - At-Risk

### Overview

The purpose of the At-Risk Interchange is to obtain student-level census block information needed to implement the new at-risk measure as described in HB22-1202. As provided for under SB24-188, data needed for the implementation of this measure will be collected beginning with the 2024-25 school year. In the 2025-26 school year, the new at-risk measure will be fully implemented and included in the Total Program funding calculation as described in the Public-School Finance Act which will continue to utilize student-level data reported through the Student October Count data collection. As part of this legislation, the new at-risk measure will take into consideration the following:

- Percentage of students certified as eligible for free lunch based on receipt of public benefits (SNAP, TANF, Food Distribution Program on Indian Reservation) or categorical eligibility (foster, homeless, migrant, runaway or Head Start); and
- Supplemented by the direct certification of students participating in Medicaid or Children's Basic Health Plan; and
- A neighborhood socioeconomic status index that weighs students' needs on 5+ socioeconomic status neighborhood factors, linked to each student's census block group.

### Deadlines

The At-Risk Interchange will open July 15<sup>th</sup>, 2024 (tentative) and close on November 8<sup>th</sup>, 2024. This interchange will only be available during the Student October Collection.

### File Layout and Definitions

- [2024-2025 At-Risk Interchange File Layout \(PDF\)](#) (posted 3/22/2024)

### Business Rules

- [2024-2025 At-Risk Interchange Business Rules \(XLSX\)](#) (updated 7/15/2024)

### Templates

- [2024-2025 At-Risk Interchange File Template \(XLSX\)](#) (posted 4/5/2024)

### Timeline

- [2024-2025 At-Risk Interchange File Timeline NEW!](#) (posted 8/2/2024)

### Training

#### Where to Meet for Live Webinars

(Meeting links will be available 15 minutes prior to the scheduled start time.)

Meeting links will appear here when available

Join by phone: 1 (929)-341-4269 Meeting ID: TBD

- **At-Risk Interchange and Geocoding Office Hours** September 11, 2024 (1PM)
- **Overview of the Data Pipeline At-Risk Interchange File** August 20, 2024 (1PM)
  - [Download presentation \(PDF\)](#)
  - [View webinar recording \(00:37:14\)](#)
- **Overview of the Geocode Tool** August 13, 2024 (10AM)
  - [Download presentation \(PDF\)](#)
  - [View webinar recording \(00:45:10\)](#)
- **Overview of the Geocode Tool** July 24, 2024 (1PM)
  - [Download presentation \(PDF\)](#)
  - [View webinar recording \(00:51:10\)](#)

### Additional Resources

- [Instructions for Using the Census Geocoder Tool \(PDF\)](#) Updated September 10, 2024
- [Valid Census Block Data Combinations \(XLS\)](#) Posted July 15, 2024

### Internal CDE Resources

- [School Auditing Office At-Risk Count Webpage](#)

Contact: At-Risk Measure




## At-Risk Interchange File Layout and Definitions

### Field List:

\*Indicates required field.

NOTE: ZERO-FILL ALL NON-APPLICABLE FIELDS

A header row is required

Name of Field	Field Length	Text Start Position	Text End Position	CSV Order	Excel Column	Example(s)	Remarks
Reporting School District Code*	4	1	4	1	A2	0000	
Student's State ID (SASID)* 	10	5	14	2	B2	0000000000	
State Code*	2	15	16	3	C2	08	
County Code*	3	17	19	4	D2	001	
Tract Code*	6	20	25	5	E2	009307	
Block Code*	4	26	29	6	F2	2018	

### Field Descriptions:

#### **Reporting School District/BOCES Code**

A unique code assigned to a district by CDE. [Refer to School District/BOCES Code table.](#)

#### **Student's State ID**

A unique ten-digit number must be assigned to each student by CDE.

#### **State Code**

This field contains the two-digit state code, as defined by the US census bureau.

#### **County Code**

This field contains the three-digit county code that identifies each county.

#### **Tract Code**

This field contains the six-digit track number, which is a small relatively permanent statistical subdivision of a county.

#### **Block Code**

This field contains the four-digit block number, which is a statistical area bounded by both visible and nonvisible features and is small in area (i.e. a smaller location found within a given tract).

- This interchange file will include six (6) required data fields:
  - Reporting School District Code
  - Student's State ID
  - **State Code**
  - **County Code**
  - **Track Code**
  - **Block Code**
- The state, county, track and block codes are **unique combinations of data** specific to a given student's **primary physical residential address**. These fields should be stored together.
- Notes:
  - County code associated with census block data will **not** be the same as the county code reported in the Student School Association Interchange file.
  - The same track and block code combinations can appear in multiple counties. Therefore, it is very important that census data is obtained through a geocoding process.

- For most district, obtaining and storing individual student-level census block data will require new processes to be established.
- While Student Information Systems (SIS) have been notified by CDE of this new data collection requirement, **most are still working on implementing this new requirement.**
- For the 2024-2025 school year, districts should ensure they have processes in place for gathering and storing this data. In some cases, an SIS may have existing fields associated with 1 or more fields (such as tract and block codes), but not for all data elements associated with an address's census block.



- As of today, it is CDE's understanding that Infinite Campus is working individually with districts as they submit cases related to the At-Risk interchange reporting.
- Infinite Campus will provide guidance as needed to navigate their systems when geolocating students' physical addresses and obtaining census block group information.
- Districts will submit cases related to the At-Risk interchange reporting to their IC administrators and **are encouraged to reach out to their IC administrators for direct assistance.**



- As of today, it is CDE's understanding that PowerSchool will introduce a new Census Block Data section that will be added to the CO Demographics page.
- This will include a Confidentiality Program Participant checkbox and read-only fields for State Code, County Code, Tract Code, and Block Code (which will be populated later through a Geocode API).
- Additionally, a Foster Child checkbox will be added under the Student Demographics Information section.
- Users can start entering data for the Foster Child and Confidentiality Program Participant fields, while the Census Block Data fields will be updated in a future release.
- Districts are **encouraged to reach out to their PowerSchool administrators for information on future updates and other assistance.**

# Obtaining Census Data



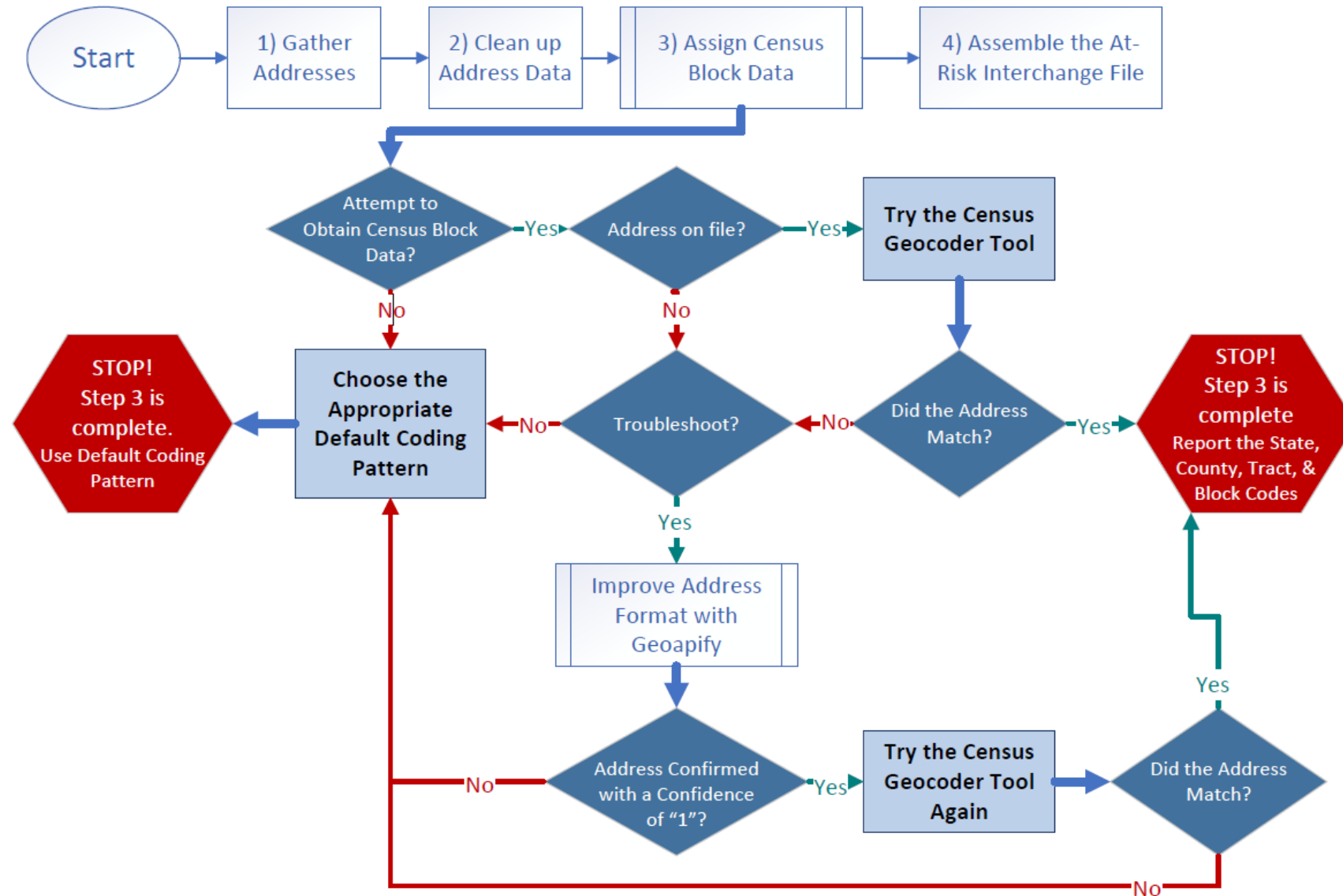


- Districts using their own GIS systems should use the most recent Census data available([2020 Decennial Census Geographies Data](#)).
- Census geographies are only updated every 10 years, after each decennial census.
- Districts using their own GIS systems likely already maintain the necessary Census data, but in some cases, it may still be necessary to directly download the most recent Census data.
- Note: The Census Geocoder Tool uses a current “Benchmark” and “Vintage.” The Benchmark is the time period when the Census data snapshot was created (typically twice a year), and the Vintage is a set of data that each census or survey is linked to. Refer to the [Census Geocoder User Guide](#) for detailed information.



- Overview of the Census Geocode Tool Training ([Power Point PDF](#)) ([Recording](#))
- [Instructions for Using the Census Geocoder Tool](#)
  - Updated September 10, 2024
  - The Delta symbol  $\Delta$  is used to identify information that has been updated or clarified since the previous edition of this document.
    - Appendix A: GIS System Information
    - Appendix B: Student Information System
    - Appendix C: High-Level Process Flow
- Census Geocoder Tool- Status
  - Per Census, the Geocoder Tool was updated on 9/3/2024 to ACS 2024
  - If you last attempted geocoding using the tool prior to 9/3/24, we recommend that you attempt to re-geocode addresses that did not previously match.

# Flowchart: Obtaining and Reporting Census Data



# Default Coding Patterns for Missing Census Block Data



Description	State Code	County Code	Track Code	Block Code
<b>Address on File- Did Not Attempt to Obtain Census Block Data:</b> The district has a primary physical address on file but did NOT attempt to obtain census block data using the geocode tool.	08	000	000001	0001
<b>Address on File- No Census Block Data Returned:</b> The district confirmed that the primary physical address is valid using USPS but the geocode tool did not return census block data.	08	000	000002	0002
<b>Confidentiality Program:</b> No census block data was provided because the district has confirmed the student is participating in a confidentiality program.	08	000	000003	0003
<b>No Physical Primary Address on File- Identified Group:</b> The district does not have a ( <u>valid</u> ) primary physical address on file and the student is confirmed homeless, migrant, foster child, or attending a detention center	08	000	000004	0004
<b>No Physical Primary Address on File- No Identified Group:</b> The district does not have a ( <u>valid</u> ) primary physical address on file and the student is not confirmed homeless, migrant, foster child, or attending a detention center.	08	000	000005	0005
<b>Out of State codes:</b> The district has a primary physical address on file that is not in Colorado	08	000	000006	0006

# Default Coding Pattern – Did Not Attempt to Geocode



Description	State Code	County Code	Track Code	Block Code
<b>Address on File- Did Not Attempt to Obtain Census Block Data:</b> The district has a primary physical address on file but did NOT attempt to obtain census block data using the geocode tool.	08	000	000001	0001

# Default Coding Patterns – Special Circumstances



Description	State Code	County Code	Track Code	Block Code
<b>Confidentiality Program:</b> No census block data was provided because the district has confirmed the student is participating in a confidentiality program.	08	000	000003	0003
<b>Out of State codes:</b> The district has a primary physical address on file that is not in Colorado	08	000	000006	0006

# Default Coding Pattern – Valid Address (per Geoapify), but Census Geocode Tool Did Not Return Data



Description	State Code	County Code	Track Code	Block Code
<b>Address on File- No Census Block Data Returned:</b> The district confirmed that the primary physical address is valid using USPS but the geocode tool did not return census block data.	08	000	000002	0002



# Default Coding Pattern – No Address on File or Invalid Address (per Geoapify)



Description	State Code	County Code	Track Code	Block Code
<b>No Physical Primary Address on File- Identified Group:</b> The district does <u>not</u> have a ( <u>valid</u> ) primary physical address on file and the student is confirmed homeless, migrant, foster child, or attending a detention center	08	000	000004	0004
<b>No Physical Primary Address on File- No Identified Group:</b> The district does <u>not</u> have a ( <u>valid</u> ) primary physical address on file and the student is <u>not</u> confirmed homeless, migrant, foster child, or attending a detention center.	08	000	000005	0005



# Business Rules: Errors



Data Element Name	Error Code	Message
ARM_COUNTY_CODE	AR06	County code must be a 3-digit number and is required.
ARM_COUNTY_CODE	AR07	If County Code = '000', then the Tract Code and Block Code must follow one of the Missing Census Block Data coding patterns described in the file layout.
BLOCK_CODE	AR09	Block Code must be a 4-digit number and is required.
DISTRICT_CODE	AR01	District Number is invalid.
DISTRICT_CODE	AR02	District Code on file must match reporting district code on file upload screen, please select the correct district code when uploading this file.
SASID	99999	The SASID is invalid, or name, birth date, or gender does not match what's in the RITS system for the entered SASID
SASID	AR03	SASID duplicates not allowed.
SASID	AR04	The SASID must be a 10-digit number.
SASID	AR10	SASID is mandatory.
STATE_CODE	AR05	State Code must be a 2-digit number ('08' only) and is required. Please refer to the At-Risk Interchange File Layout for out of state student coding.
TRACT_CODE	AR08	Tract Code must be a 6-digit number and is required.
TRACT_CODE	AR11	The submitted census block data (State Code, County Code, Tract Code, and Block Code) are not a valid combination. The submitted combination is not a valid census block location. Refer to the At-Risk Interchange Data Pipeline website for a list of valid census block data combinations.

AR03 error will cause significant issues with your Student October Snapshot



# Contact

Visit: [At-Risk Interchange Website](#)  
Contact: [ARMeasure@cde.state.co.us](mailto:ARMeasure@cde.state.co.us)

Questions?