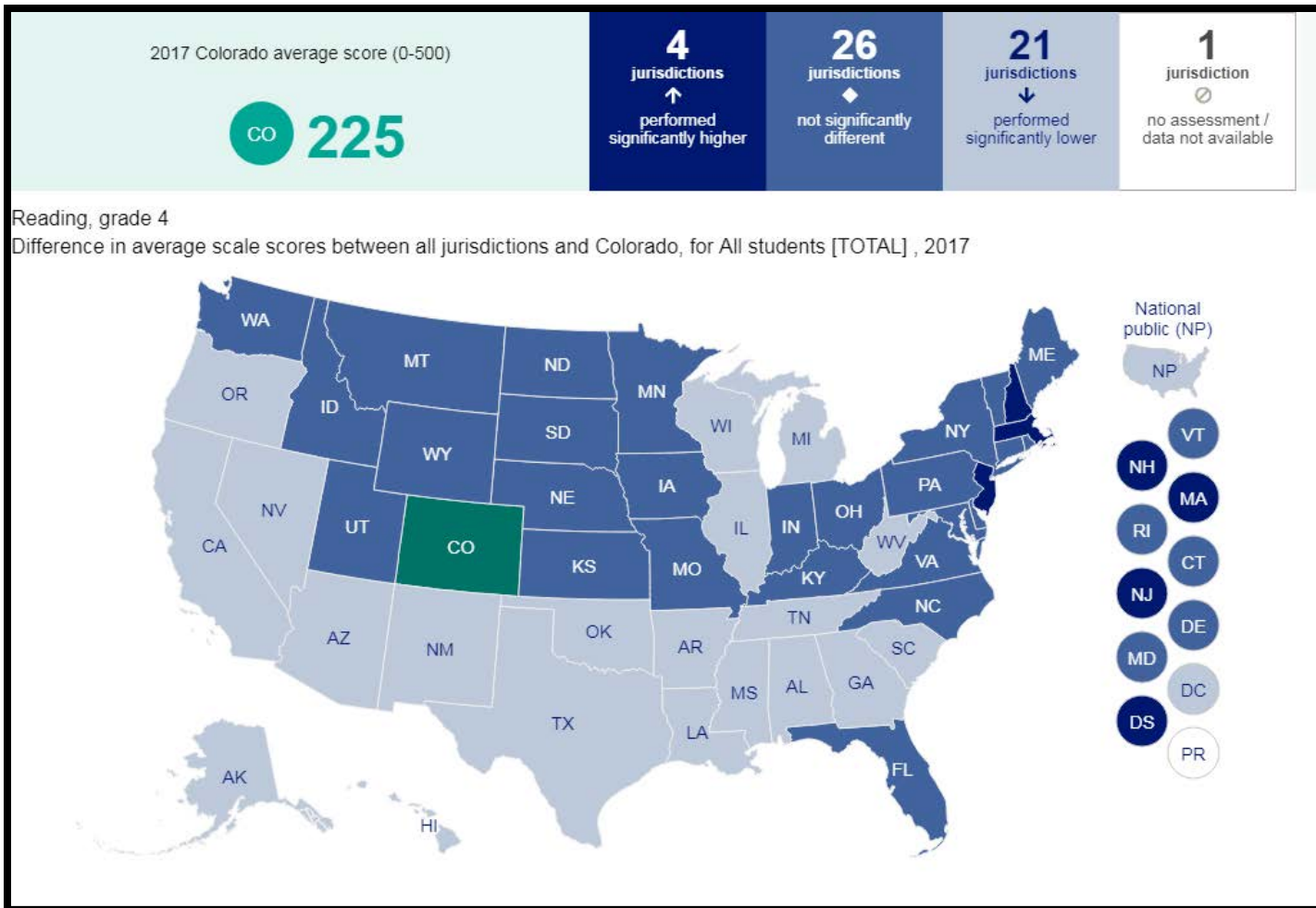


## NAEP 2017 Reading Grade 4: Average Scale Score

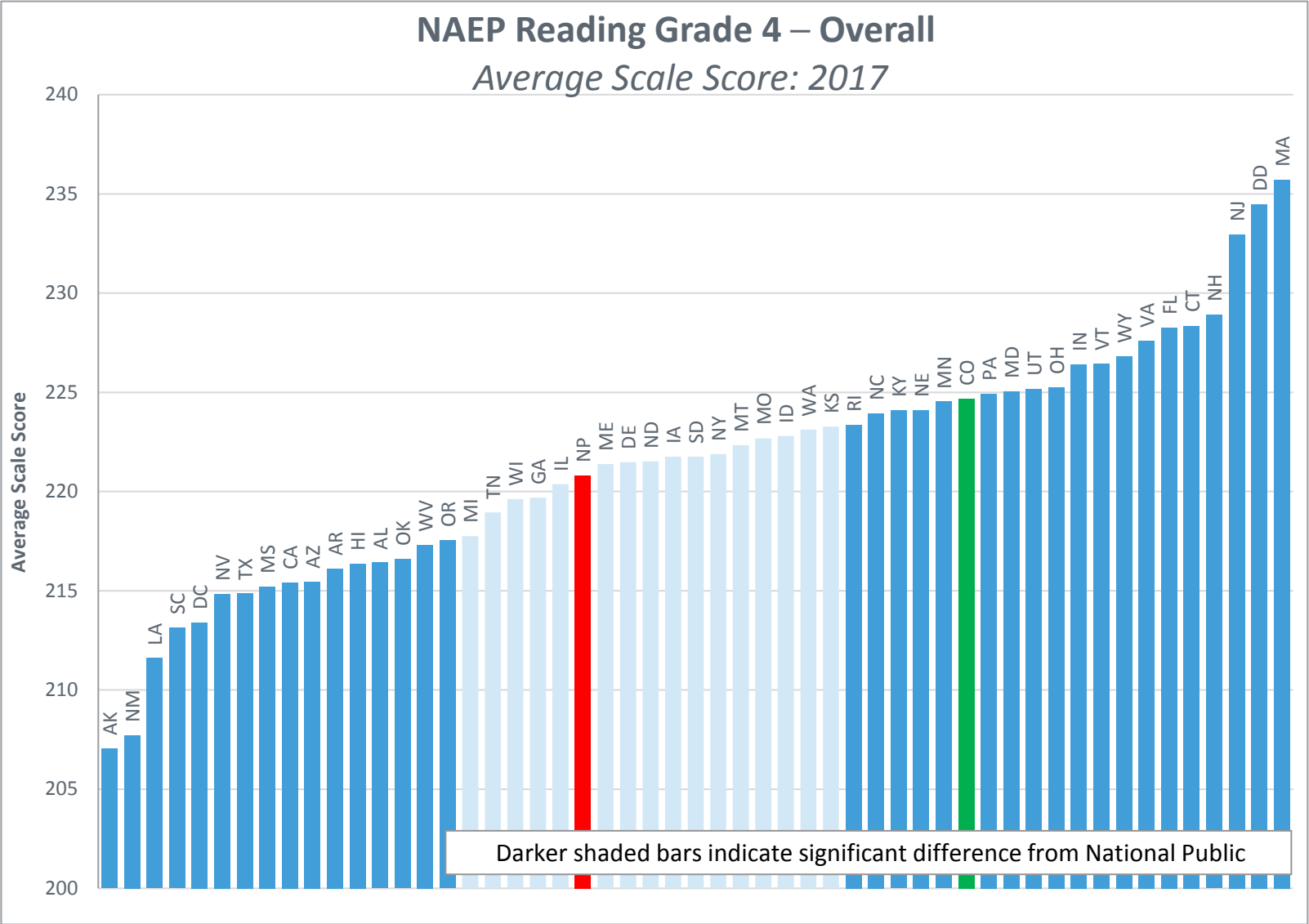


The map compares Colorado 4<sup>th</sup> graders average scale score on the NAEP 2017 Reading assessment to the other 49 states, the District of Columbia and the Department of Defense schools. Colorado which is shaded green is the focal state. States shaded light blue scored lower than Colorado. Dark-blue shaded states scored higher than Colorado and grey-shaded states scored the same as Colorado. Because NAEP results are based on samples, there is a margin of error associated with each score or percentage. Therefore, only those differences in scores or percentages that meet NAEP's standards for statistical significance are reported as higher or lower.



### National NAEP 2017 Reading Grade 4 Average Scale Scores

#### NAEP Reading Grade 4 – Overall Average Scale Score: 2017



Using the average scale score on the NAEP 2017 Reading assessment for each state, this bar graph compares Colorado 4<sup>th</sup> graders with the other 49 states, the District of Columbia and the Department of Defense schools. The red bar indicates the National Public average. The green bar represents Colorado. Darker shaded bars indicate significant difference from National Public average.

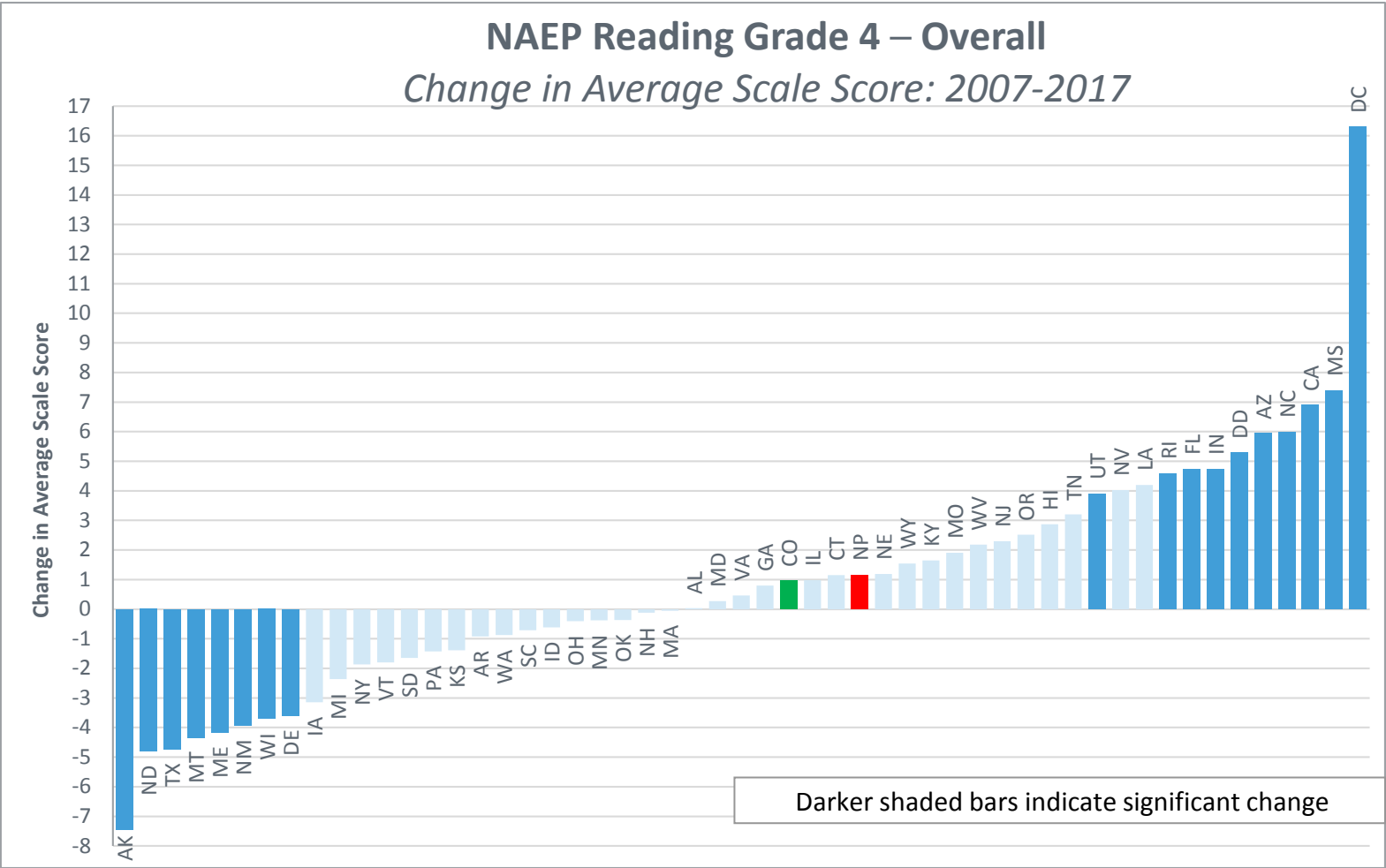
Darker shaded bars indicate significant difference from National Public



### National Change in NAEP Grade 4 Reading Scale Scores Over Ten Years

### NAEP Reading Grade 4 – Overall

*Change in Average Scale Score: 2007-2017*



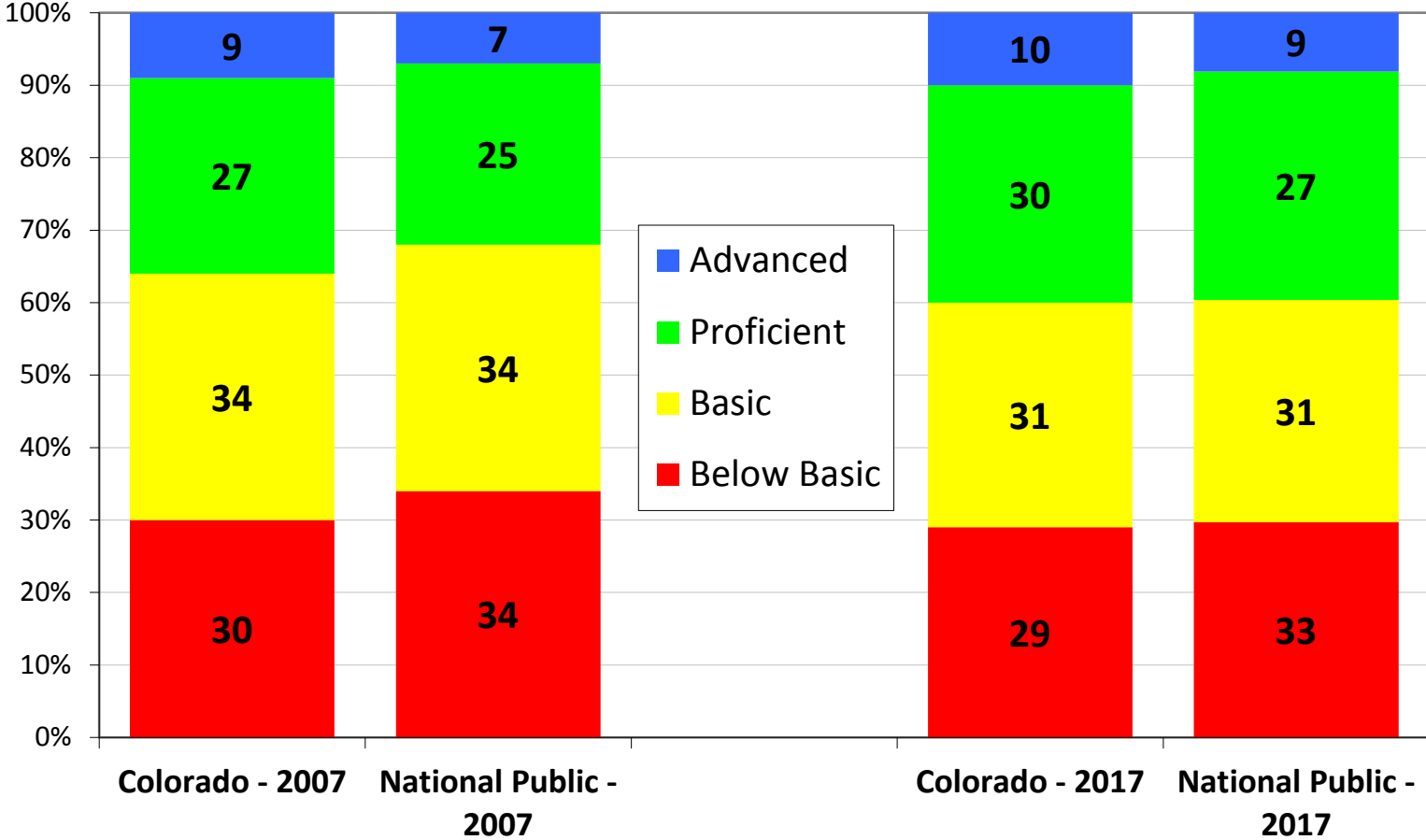
Using the average scale score on the NAEP 2017 Reading assessment for each state, this bar graph compares Colorado 4<sup>th</sup> graders with the other 49 states, the District of Columbia and the Department of Defense schools. The red bar indicates the National Public average. The green bar represents Colorado. Darker shaded bars indicate significant difference from National Public average.

Darker shaded bars indicate significant change



**Change in NAEP Reading Grade 4 Achievement Levels Over Ten Years**

**NAEP Reading - Grade 4**  
*Achievement Levels: 2007 & 2017*

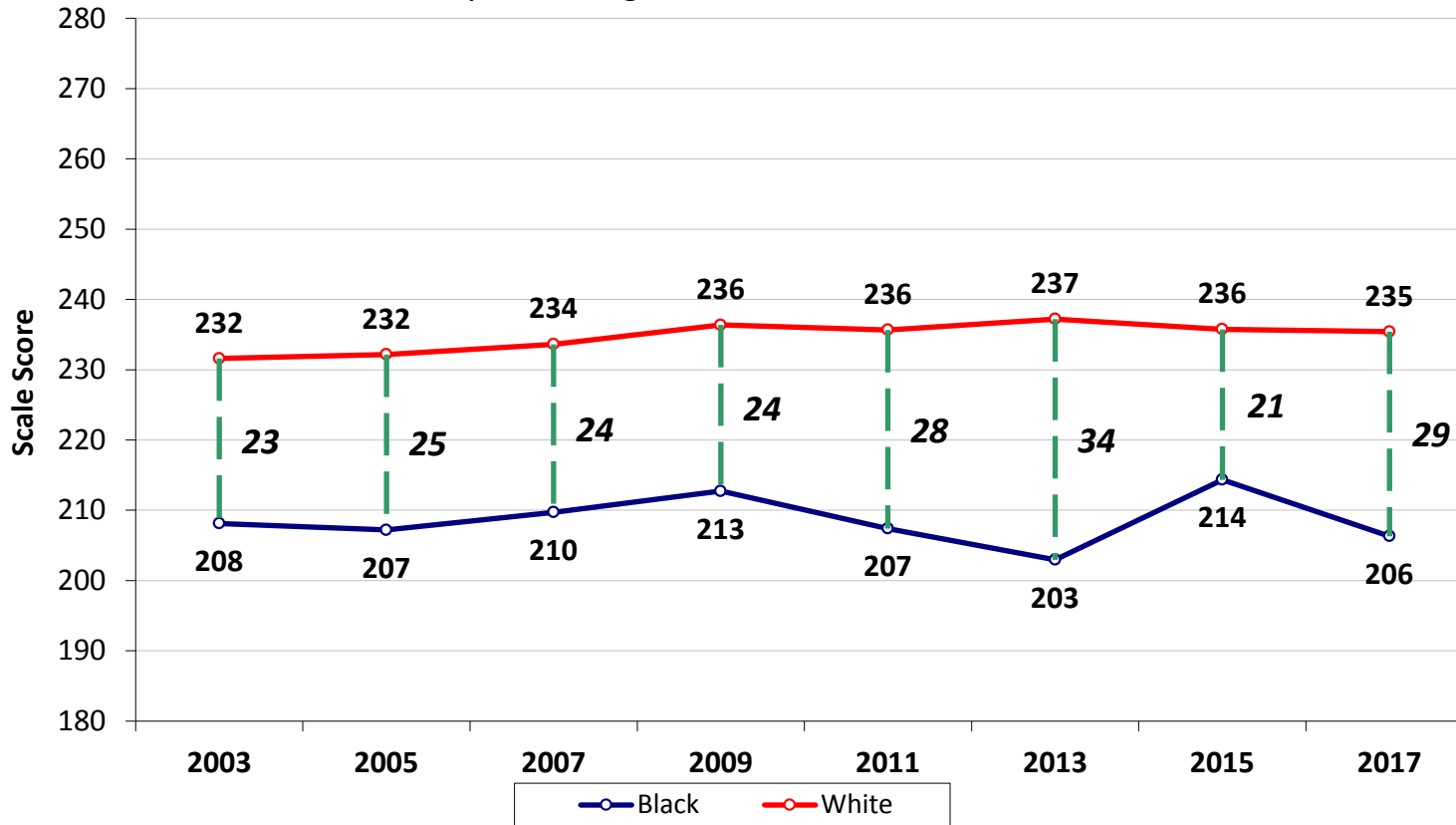


The bar chart on the far left compares the percentages at each NAEP Reading achievement level for 4<sup>th</sup> graders in Colorado and National Public in 2007. The bar chart on the right compares the percentages at each NAEP Reading achievement level for 4<sup>th</sup> grade in Colorado and National Public in 2017. Blue represents the percent of students scoring in the advanced achievement level. Green represents the percent of students scoring in the proficient achievement level. Yellow represents the percent of students scoring in the basic achievement level. Red represents the percent of students that scored below the basic achievement level.



## Colorado NAEP Reading Grade 4 White / Black Gap

### NAEP Reading Grade 4 – White / Black Gap - Average Scale Score: 2003-2017



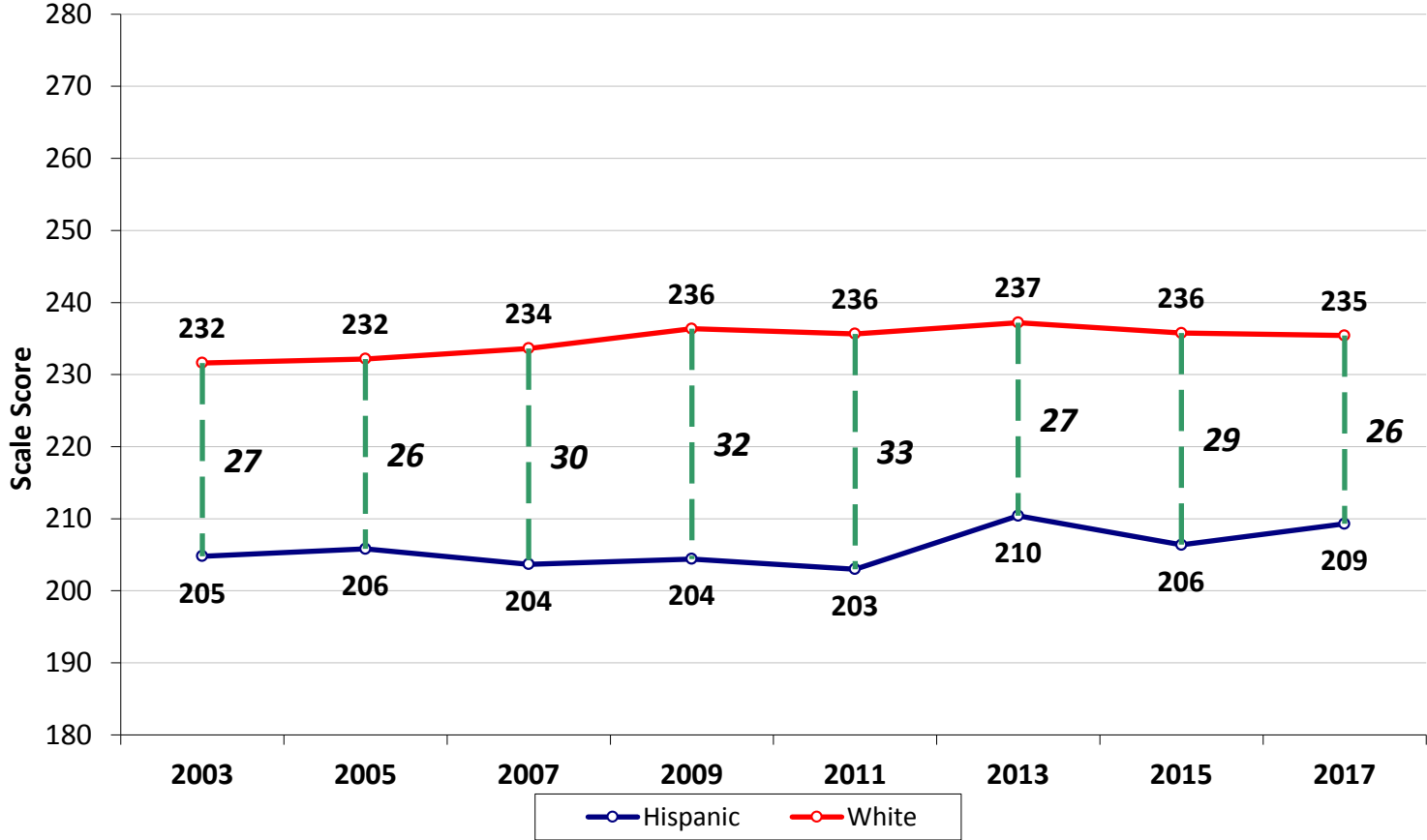
This is a comparison of Colorado 4<sup>th</sup> grade student subgroups using the average scale scores on the NAEP Reading assessment extending back to 2003. The red line represents white student 4<sup>th</sup> grade average scale scores while the blue line represents black student 4<sup>th</sup> grade average scale scores. The dotted green vertical lines represent the score gaps between the student subgroups.

NOTE: The NAEP Reading scale ranges from 0 to 500. Observed differences are not necessarily statistically significant.  
SOURCE: U.S. Department of Education, Institute of Education Sciences, National Center for Education Statistics, National Assessment of



### Colorado NAEP Reading Grade 4 White / Hispanic Gap

#### NAEP Reading Grade 4 – White / Hispanic Gap - Average Scale Score: 2003-2017



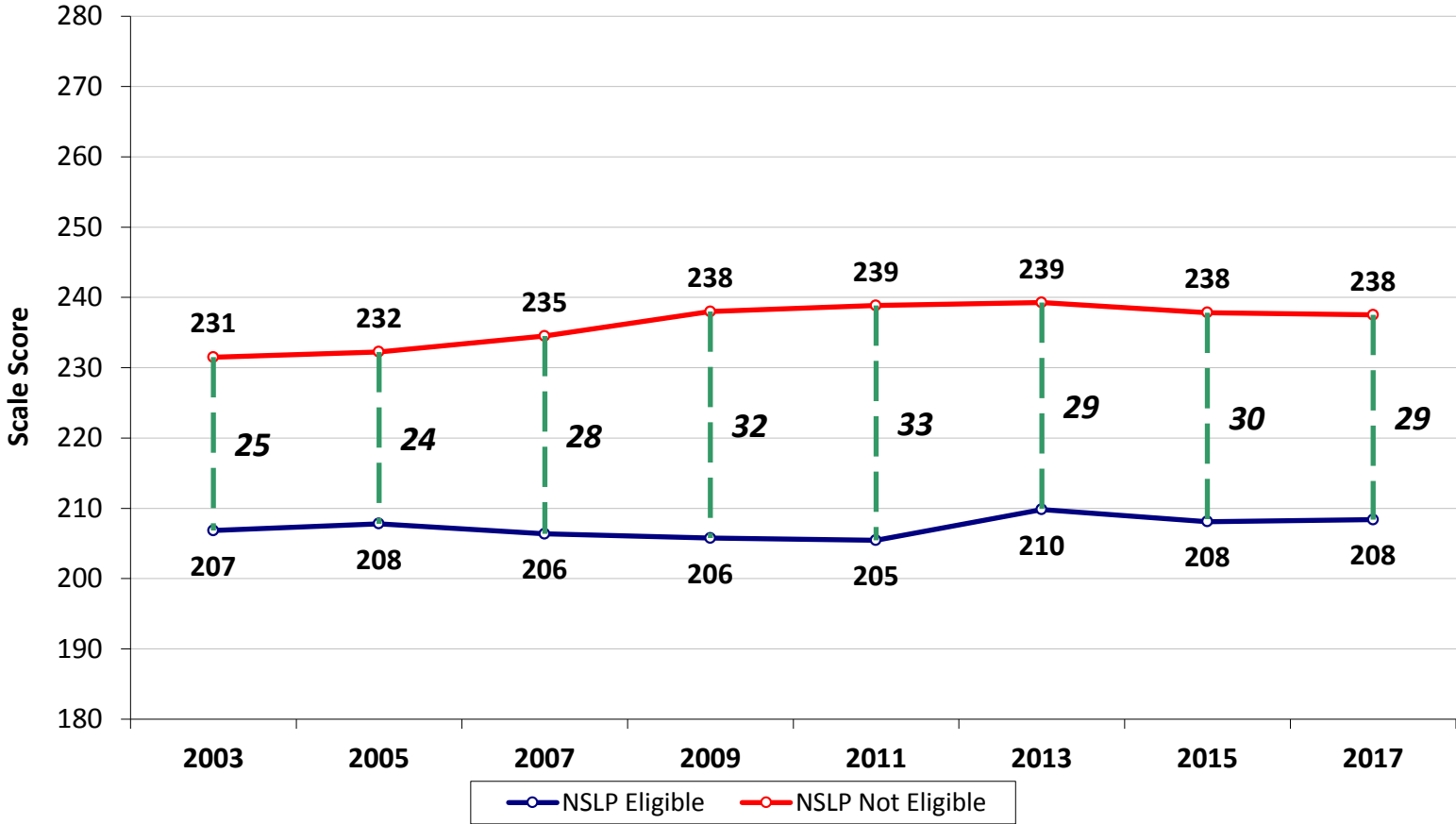
This is a comparison of Colorado 4<sup>th</sup> grade student subgroups using the average scale scores on the NAEP Reading assessment extending back to 2003. The red line represents white student 4<sup>th</sup> grade average scale scores while the blue line represents Hispanic student 4<sup>th</sup> grade average scale scores. The dotted green vertical lines represent the score gaps between the student subgroups.

NOTE: The NAEP Reading scale ranges from 0 to 500. Observed differences are not necessarily statistically significant.  
SOURCE: U.S. Department of Education, Institute of Education Sciences, National Center for Education Statistics, National Assessment of Educational Progress



### Colorado NAEP Reading Grade 4 Free and Reduced Lunch / Non-Free and Reduced Lunch Gap

#### NAEP Reading Grade 4 – National School Lunch Program Eligibility Gap - Average Scale Score: 2003-2017



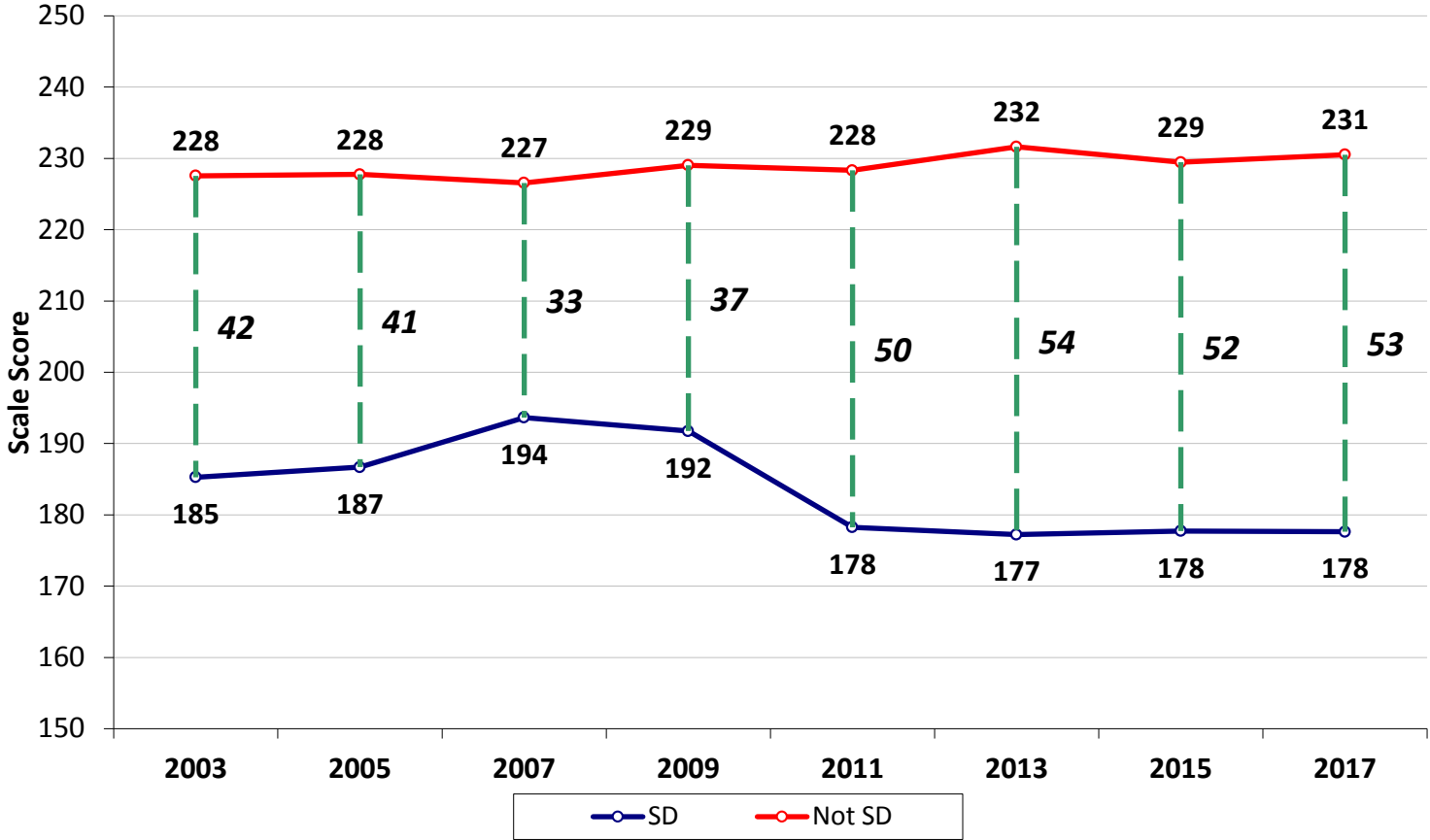
This is a comparison of Colorado 4<sup>th</sup> grade student subgroups using the average scale scores on the NAEP Reading assessment extending back to 2003. The red line represents 4<sup>th</sup> grade average scale scores of students not eligible for free and reduced lunch while the blue line represents 4<sup>th</sup> grade average scale scores of students eligible for free and reduced lunch. The dotted green vertical lines represent the score gaps between the student subgroups.

NOTE: The NAEP Reading scale ranges from 0 to 500. Observed differences are not necessarily statistically significant.  
SOURCE: U.S. Department of Education, Institute of Education Sciences, National Center for Education Statistics, National Assessment of Educational



### Colorado NAEP Reading Grade 4 Non-Disabled Students / Students with Disabilities Gap

#### NAEP Reading Grade 4 – Students with Disabilities Gap - Average Scale Score: 2003-2017



This is a comparison of Colorado 4<sup>th</sup> grade student subgroups using the average scale scores on the NAEP Reading assessment extending back to 2003. The red line represents non-disabled students' 4<sup>th</sup> grade average scale scores while the blue line represents students with disabilities 4<sup>th</sup> grade average scale scores. The dotted green vertical lines represent the score gaps between the student subgroups.

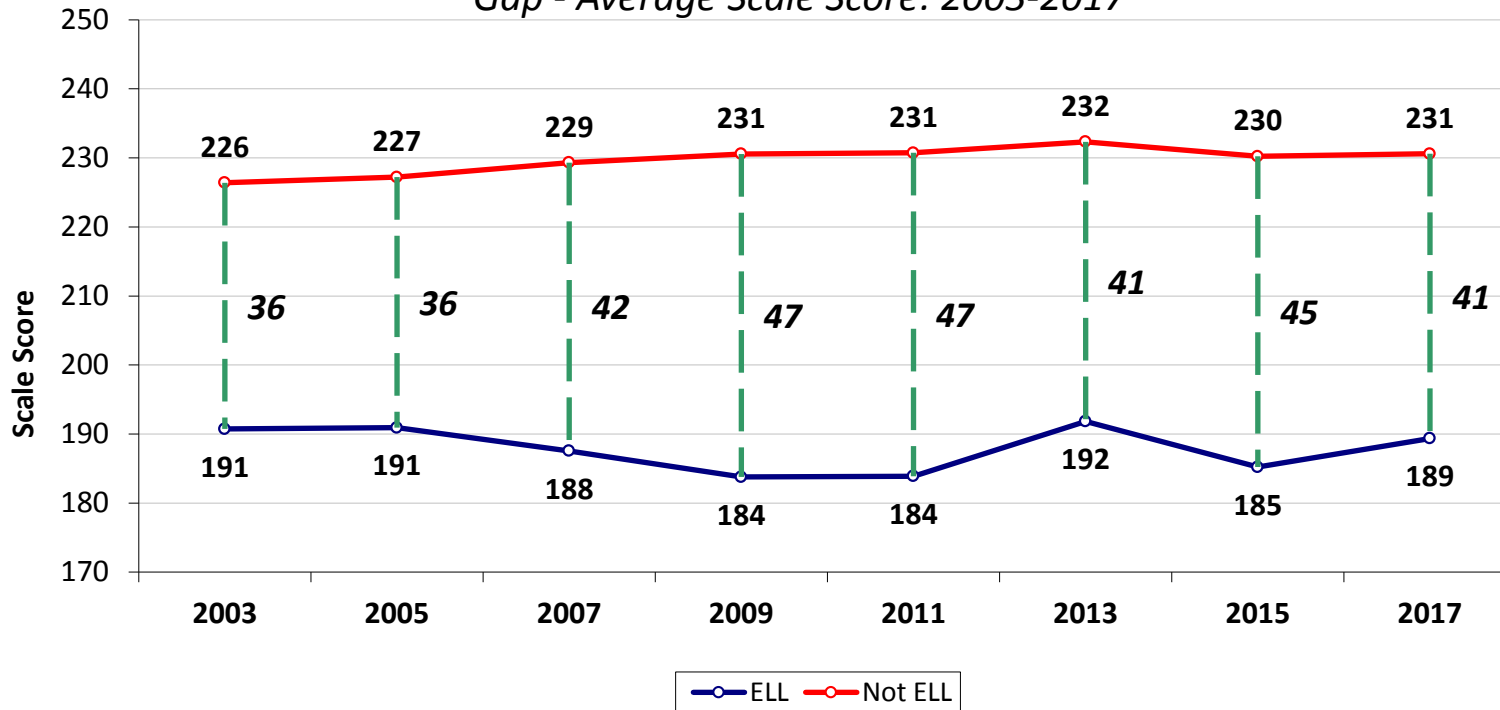
NOTE: The NAEP Reading scale ranges from 0 to 500. Observed differences are not necessarily statistically significant.  
SOURCE: U.S. Department of Education, Institute of Education Sciences, National Center for Education Statistics, National Assessment of Educational Progress





## Colorado NAEP Reading Grade 4 Non-English Language Learners / English Language Learners Gap

### NAEP Reading Grade 4 – English Language Learners Gap - Average Scale Score: 2003-2017



This is a comparison of Colorado 4<sup>th</sup> grade student subgroups using the average scale scores on the NAEP Reading assessment extending back to 2003. The red line represents students who are not English language learners 4<sup>th</sup> grade average scale score while the blue line represents students who are English language learners 4<sup>th</sup> grade average scale score. The dotted green vertical lines represent the score gaps between the student subgroups.

NOTE: The NAEP Reading scale ranges from 0 to 500. Observed differences are not necessarily statistically significant.

### Where can I learn more?

- <http://www.cde.state.co.us/assessment/conaep>
- <https://www.nationsreportcard.gov>