



COLORADO
Department of Education

School Plan Type Assignments

Dr. Keith Owen, Deputy Commissioner

**Alyssa Pearson, Executive Director Accountability and Data
Analysis**

State Board of Education
December 10, 2014

Background

- **The Education Accountability Act of 2009 (SB-163, section 22-11-208 and 22-11-210 C.R.S.) requires an annual review of district and school performance.**
- **All districts annually receive a District Performance Framework (DPF) report. This determines their accreditation rating.**
- **All schools annually receive a School Performance Framework (SPF) report. This determines their school plan types.**
- **For schools, the Department makes a recommendation to the State Board. The State Board makes the final determination.**

Purposes

- For all districts and schools, provide a statewide comparison that highlights performance strengths and areas for improvement.
- Identify those districts and schools that are the lowest-performing in relation to state goals and direct state support and intervention appropriately.
- Identify those districts and schools that are the highest-performing and learn from their practices and reward them.

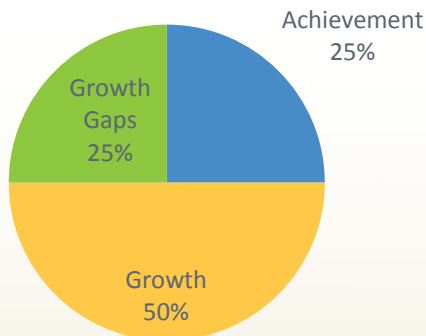
School Plan Types

- **Plan types for schools:**
 - Performance Plan
 - Improvement Plan
 - Priority Improvement Plan
 - Turnaround Plan

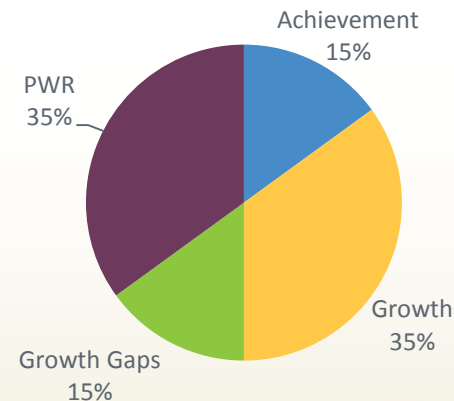
School Performance Frameworks

- Annual review of performance in the School and District Performance Frameworks (SPF and DPF)
 - Achievement (state assessments)
 - Growth and Disaggregated Growth (state assessments)
 - Post-secondary and Workforce Readiness (grad, dropout, ACT)
- Used for district accreditation ratings and school plan type assignments

Elementary and Middle Schools



High Schools and Districts



Requests to Reconsider

- **123 school requests to reconsider officially submitted:**
 - 122 school intents submitted on September 15th.
 - 23 schools submitted drafts for pre-review.
 - 76 requests for a higher rating; 47 requests to lower.
 - Technical assistance provided by CDE through webinars and one-on-one office hours.
- **CDE reviewed the requests to reconsider and weighed the additional evidence.**
- **Recommendations shared with the board, for approval.**

School Request to Reconsider Recommendations

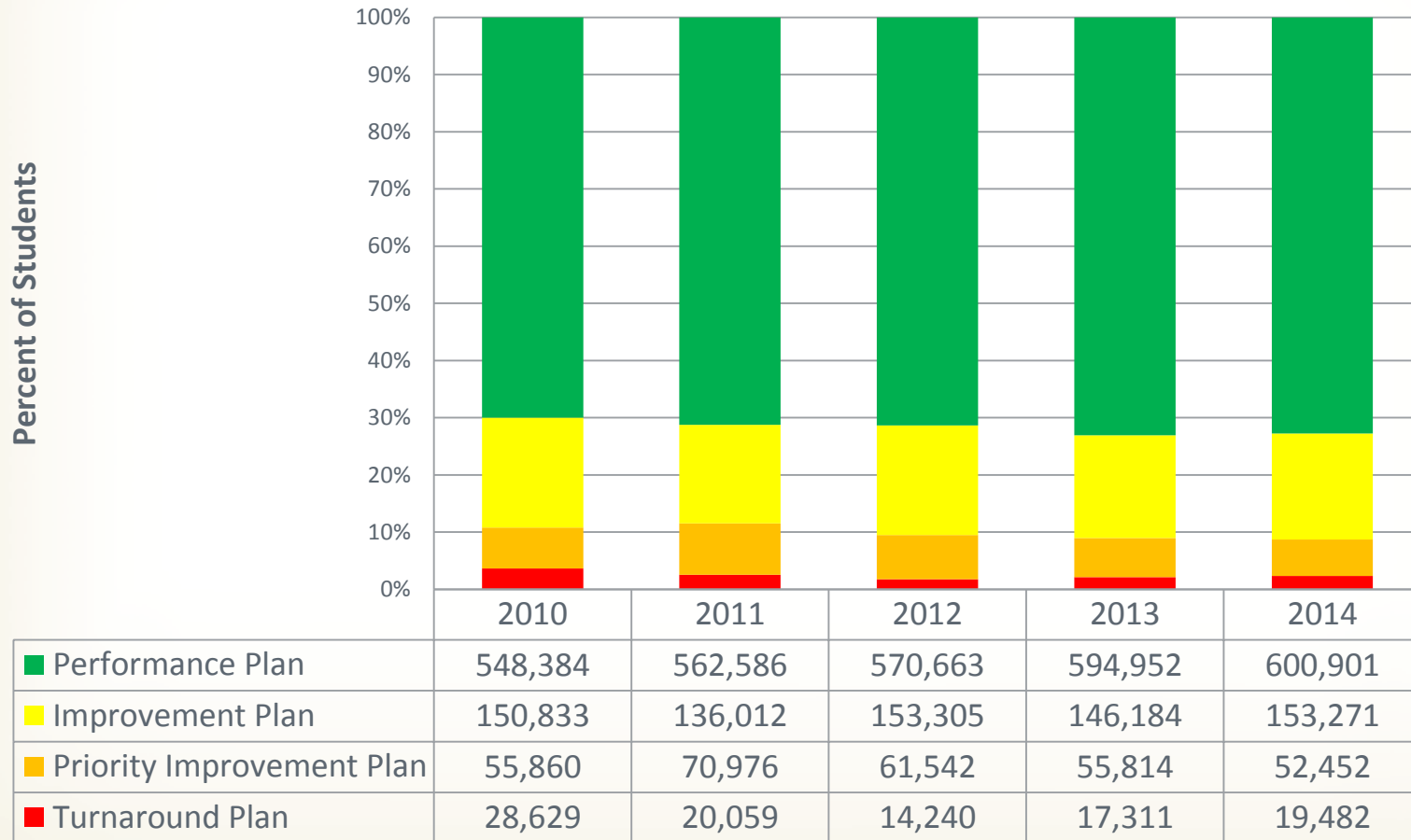
- **42 school requests recommended for approval of higher rating**
 - Inclusion of 2014 CMAS Science and Social Studies data
 - Additional data to supplement CDE's limited data due to small N size
 - Small, new and combined school issues
 - Participation rate challenges
- **34 school requests recommended for denial of higher rating**
 - Additional data submitted did not support a higher rating
- **Accepted district requests to lower ratings for 47 schools**
 - District's performance framework
 - Fiscal assurances

2010, 2011, 2012, 20113 and 2014 School Results

- The percentage of schools assigned Improvement and Turnaround Plans increased slightly, while those with Priority Improvement and Performance Plans decreased slightly.

School Plan Type	2010		2011		2012		2013		2014	
	#	%	#	%	#	%	#	%	#	%
Performance Plan	1092	67.2%	1144	69.5%	1200	70.7%	1211	70.9%	1198	70.5%
Improvement Plan	337	20.7%	301	18.3%	332	19.6%	329	19.3%	332	19.5%
Priority Improvement Plan	130	8.0%	147	8.9%	126	7.4%	119	7.0%	114	6.7%
Turnaround Plan	67	4.1%	55	3.3%	40	2.4%	49	2.9%	55	3.2%
Total	1626		1647		1698		1708		1699	

2010-2014 Student Enrollment by School Plan Type



2014 On-Line School Outcomes

Plan Type	Non-Online School		On-line School	
	#	%	#	%
Performance	1185	70.0%	13	34.2%
Improvement	321	18.9%	11	28.9%
Priority Improvement	109	6.4%	5	13.2%
Turnaround	49	2.9%	6	15.8%
Closed	30	1.8%	3	7.9%
Total	1694		38	

2014 Charter School Outcomes

Plan Type	Non-Charter School		Charter School	
	#	%	#	%
Performance	1046	68.1%	152	77.9%
Improvement	305	19.8%	27	13.8%
Priority Improvement	108	7.0%	6	3.1%
Turnaround	46	3.0%	9	4.6%
Closed	32	2.1%	1	0.5%
Total	1537		195	

2014 Innovation School Outcomes

Plan Type	Non-Innovation School		Innovation School	
	#	%	#	%
Performance	1176	69.7%	22	48.9%
Improvement	321	19.0%	11	24.4%
Priority Improvement	111	6.6%	3	6.7%
Turnaround	46	2.7%	9	20.0%
Closed	33	2.0%	0	0.0%
Total	1687		45	

2013 to 2014 School Plan Type Changes

	# of schools	% of schools
Moved down 3 levels	8	0.5%
Moved down 2 levels	19	1.1%
Moved down 1 level	170	10.2%
Stayed the same	1316	78.9%
Moved up 1 level	133	8.0%
Moved up 2 levels	21	1.3%
Moved up 3 levels	2	0.1%
Total	1669	

- Includes only schools for which complete SPF records exist for both 2013 and 2014.

2011, 2012, 2013, and 2014 Alternative Education Campus (AEC) Results

- 2014 AEC Results show an increase in the percent of schools with AEC: Performance and AEC: Improvement Plans; a decrease with AEC: Turnaround Plans.

School Plan Types	2011		2012		2013		2014	
	#	%	#	%	#	%	#	%
AEC: Performance Plan	25	33.3%	28	36.8%	30	38.5%	34	40.5%
AEC: Improvement Plan	19	25.3%	23	30.3%	26	33.3%	29	34.5%
AEC: Priority Improvement Plan	17	22.7%	14	18.4%	12	15.4%	13	15.5%
AEC: Turnaround Plan	11	14.7%	11	14.5%	10	12.8%	8	9.5%
Total	72		76		78		84	

Transition: 2015 School Plan Type Assignments

- 2014 school plan type assignments
- 2015 assessment participation rates
- Optional: 2014-15 student performance data (aligned with the Colorado Academic Standards) or postsecondary workforce data that districts may optionally submit through the request to reconsider process

Priority Improvement/Turnaround Schools

Priority Improvement and Turnaround schools range from entering Year 1 to entering Year 5 on July 1, 2015.

Number of Years on Priority Improvement or Turnaround*	Number of Schools		
	Priority Improvement	Turnaround	Total
Year 1	64	19	83
Year 2	26	16	42
Year 3	9	9	18
Year 4	10	7	17
Year 5	18	12	30

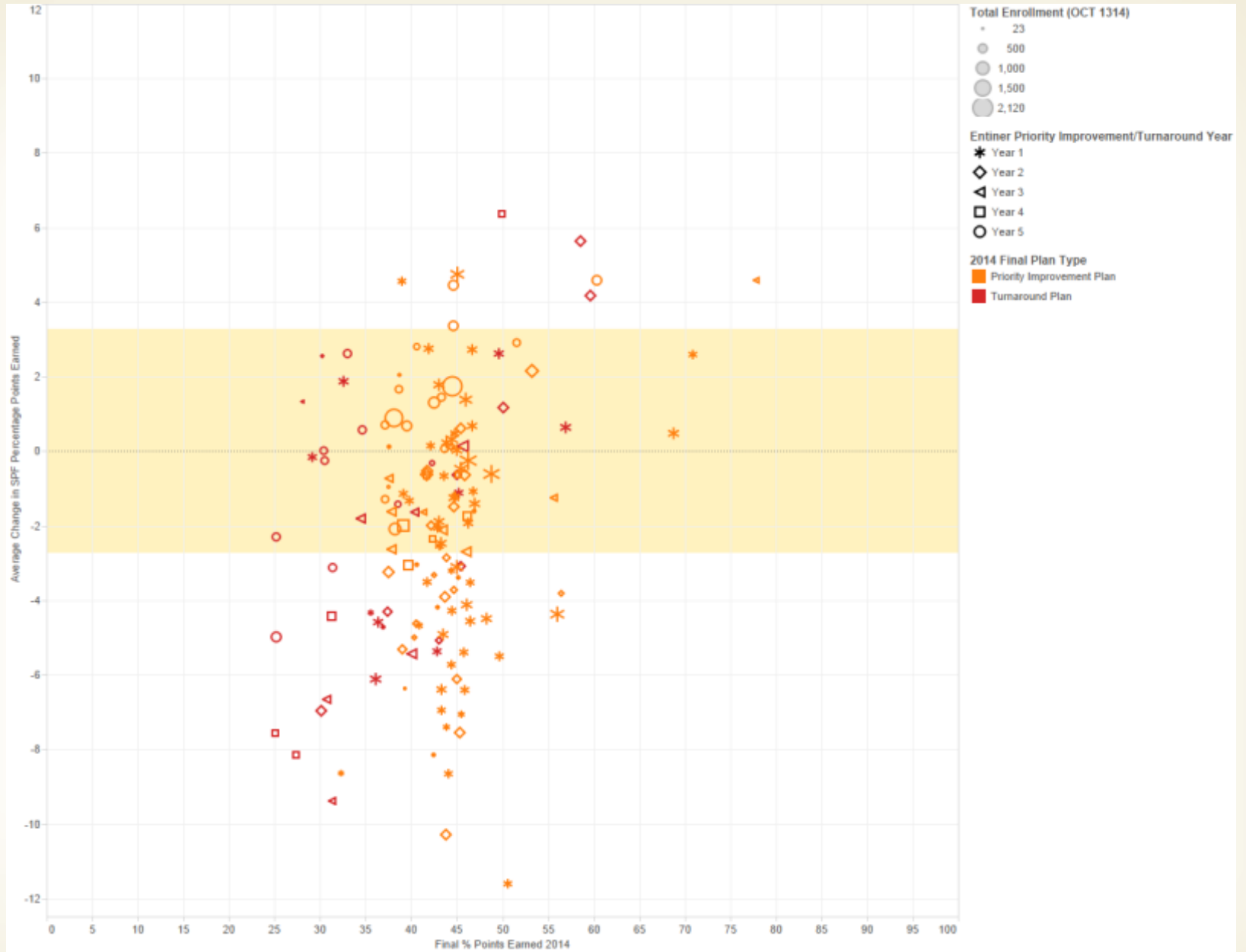
*Beginning July 1, 2015

Turnaround Schools Entering Year 5

District Name	School Name	Level	Final % Points Earned 2014	2014 Final Plan Type Category
DENVER COUNTY 1	ESCUELA TLATELOLCO SCHOOL	EMH	42.2	Turnaround Plan*
DENVER COUNTY 1	WEST HIGH SCHOOL	H	38.5	Turnaround Plan*
DOUGLAS COUNTY RE 1	HOPE ONLINE LEARNING ACADEMY ELEMENTARY	E	27.3	Turnaround Plan
DOUGLAS COUNTY RE 1	HOPE ONLINE LEARNING ACADEMY MIDDLE SCHOOL	M	36	Turnaround Plan
IGNACIO 11 JT	IGNACIO ELEMENTARY SCHOOL	E	25.1	Turnaround Plan
MONTEZUMA-CORTEZ	KEMPER ELEMENTARY SCHOOL	E	34.6	Turnaround Plan
PUEBLO CITY 60	BENJAMIN FRANKLIN ELEMENTARY SCHOOL	E	31.3	Turnaround Plan
PUEBLO CITY 60	HEROES MIDDLE SCHOOL	M	30.3	Turnaround Plan
PUEBLO CITY 60	IRVING ELEMENTARY SCHOOL	E	30.5	Turnaround Plan
PUEBLO CITY 60	RISLEY INTERNATIONAL ACADEMY OF INNOVATION	M	33	Turnaround Plan
PUEBLO CITY 60	RONCALLI STEM ACADEMY	M	25.1	Turnaround Plan
DENVER COUNTY 1	P.R.E.P. (POSITIVE REFOCUS EDUCATION PROGRAM)	MH	29.9	AEC: Turnaround Plan



Average annual change in points in relation to current performance



Source: CDE Student October, 2014; CDE School Accreditation Plans, 2014

Calculation Note: The average change in SPF percentage points earned was calculated by taking the difference between two years (e.g., (SPF % Points SY 2011) – (SPF % Points SY 2010)). The change was calculated between 2014, 2013, 2012, 2011, and 2010. The differences between those five years were then averaged. The following schools are excluded from the above chart: schools indicated as closed for the SY2012-13 and AEC schools.

Performance Trends of Priority Improvement Schools

Entering Year 4



Entering Year 5



Of the 10 Priority Improvement schools entering year 4:

- 1 **increased**
- 8 schools **flat**
- 1 school **declined**

Of the 18 Priority Improvement schools entering year 5:

- 3 schools **increased**
- 15 schools **flat**

Performance Trends of Turnaround Schools

Entering Year 4



Entering Year 5



Of the 6 Turnaround schools entering year 4:

- 1 school **increased**
- 2 schools **flat**
- 3 schools **declined**

Of the 12 Turnaround schools entering year 5:

- 10 schools **flat**
- 2 schools **declined**

Implications for Priority Improvement and Turnaround

- **CDE reviews all Priority Improvement and Turnaround Plans**
- **The plan includes:**
 - Trends, Root Causes, Targets, Improvement Strategies, Resources, Interim Measures & Implementation Benchmarks
- **Accountability Clock**
 - Pathways
 - Conversation with SBE
 - State Review Panel

Public Data Access

■ SchoolView: <http://www.schoolview.org/>

- District and School Performance Frameworks will be available on the [Performance Framework Reports and Improvement Plans](#) page

Performance Framework Reports and Improvement Plans

The district and school performance frameworks provide a snapshot of the district or school's level of attainment on academic achievement, growth, growth gaps and postsecondary readiness.

Please Note: The state Performance Framework reports listed below are available for the three latest years of framework results. The 2012 reports are highlighted in green, and are the latest results released in December 2012.

Improvement plans provide information on the district or school's data trends, root causes and targets, and identify strategies and resources the district or school will use to improve student academic outcomes. Plans are submitted to the Department for publication each year on April 15. As planning is an ongoing process, these documents reflect a "point in time" plan submission."

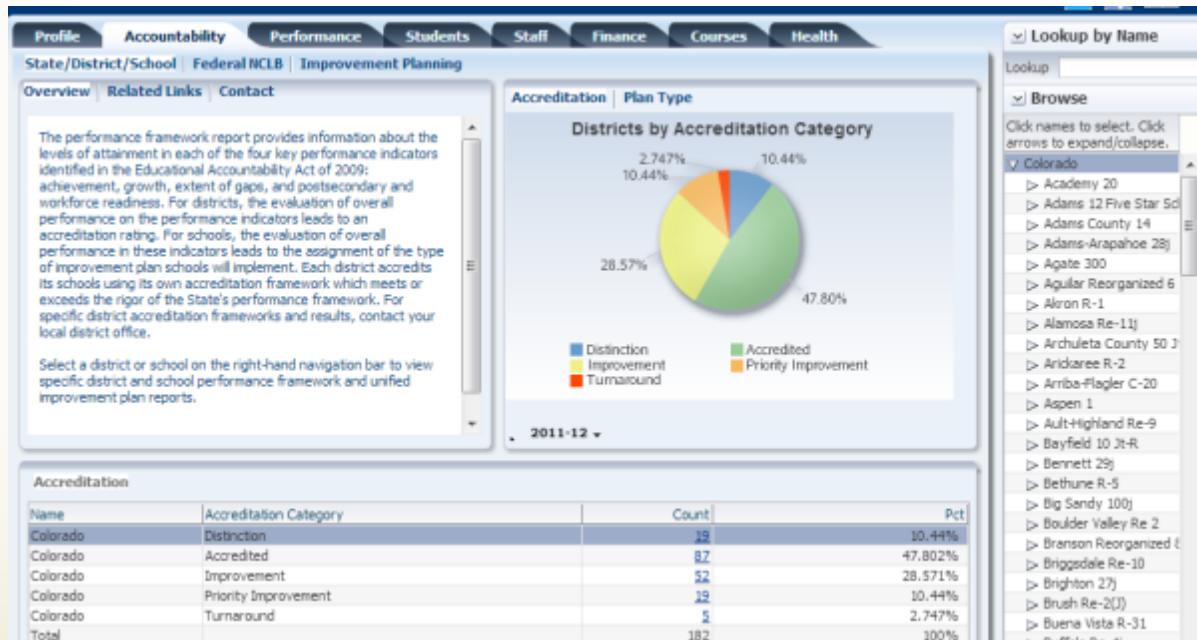
Click on a district or school name to view its performance framework reports and improvement plans:

District:	School:	Reports:
1040 - Academy 20 0020 - Adams 12 Five Star Schools 0030 - Adams County 14 0180 - Adams-Arapahoe 28J 0960 - Agate 300 1620 - Aguilar Reorganized 6 3030 - Akron R-1 0100 - Alamosa RE-11J 0220 - Archuleta County 50 JT 3040 - Arickaree R-2 1450 - Arriba-Flagler C-20 2640 - Aspen 1 3145 - Ault-Highland RE-9 1530 - Bayfield 10 JT-R	• 0017 - Academy Endeavour Elementary School • 0019 - Academy International Elementary School • 0110 - Academy Online High School • 0076 - Air Academy High School • 0249 - Antelope Trails Elementary School • 0209 - Aspen Valley High School • 0074 - Challenger Middle School • 1615 - Chinook Trail Elementary School • 2195 - Discovery Canyon Campus	1040 - Academy 20 District Report Improvement Plan 2012 - 1 Year DPF Report 2012 - 3 Year DPF Report 2011 - 1 Year DPF Report 2011 - 3 Year DPF Report 2010 - 1 Year DPF Report 2010 - 3 Year DPF Report School Report No School Selected

Public Data Access

■ Data Center

- District and School Performance Framework reports
- Interactive pie charts of the distribution of plan types
- Bar charts on the percent of points earned in the frameworks



Additional data views are available on the web

<http://www.cde.state.co.us/accountability/performanceframeworkresults>

