

Data Tools & Reports

Accountability & Continuous Improvement Unit



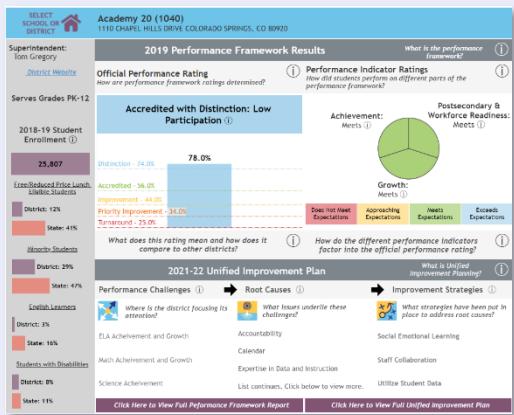
COLORADO
Department of Education

Overview

This purpose of this fact sheet is to provide a brief overview of the data visualization tools and resources that are available to support the work of education stakeholders.

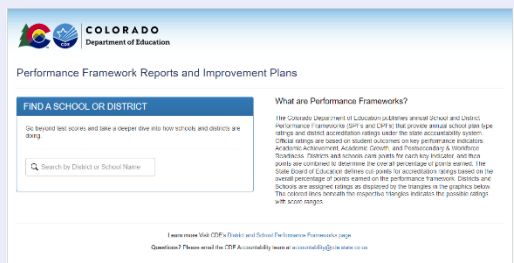
Tools & Reports for Individual Schools and Districts

<http://www.cde.state.co.us/accountability/schoolviewdataandresults>



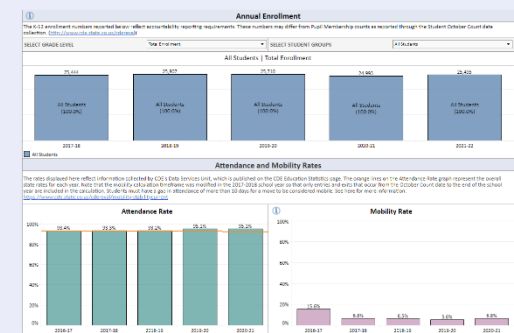
Performance Snapshot

The Performance Snapshot provides an overview of key elements from the most recent District and School Performance Framework Reports and Unified Improvement Plans. This report is primarily designed for users with existing knowledge of the performance frameworks and improvement planning process. It provides a significant amount of explanatory information that may make it accessible to broader audiences. Use this tool to access reports for individual districts and schools.



Performance Frameworks Reports and Unified Improvement Plans

District and School Performance Frameworks are used to determine performance ratings under the state accountability system. Unified Improvement Plans document the strategies that districts and schools implement as part of the continuous improvement cycle. Use this tool to access reports for individual districts and schools in PDF format. Reports for the current year and for prior years going back to 2010 are available.



School and District Dashboard

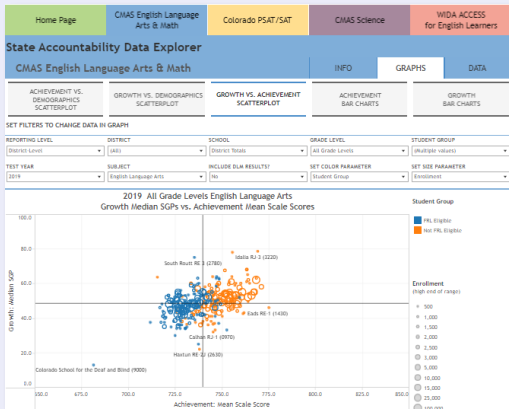
The Dashboards are made up of a suite of reports that have been designed to support improvement planning efforts by districts and schools. The dashboards allow users to interact with graphs and tables showing demographic information along with performance data and ratings generated under the state accountability system. Use this online tool to view current information for individual schools and districts along with several years of historical data.

Last Updated: July 2022

Tools and Reports to Access Statewide Datasets

<http://www.cde.state.co.us/accountability/schoolviewdataandresults>

Data Explorer Tool



This online tool provides access to graphs and tables showing performance outcome measures calculated at the state, district, and school levels. These measures encompass the metrics used within the state performance frameworks, but also provide access to a broader set of information that may be used to support improvement planning efforts or to facilitate other types of evaluation and analysis. Data tables can be exported to spreadsheets, and graphs can be downloaded in PDF format or as image files. District users may access [a secure version of this tool](#) that displays performance data for their own district and schools even in cases where there are not enough records to meet the minimum n-count thresholds for public reporting.

State Accountability Data Files

The screenshot shows a large data table with multiple columns and rows, representing performance framework information for all schools and districts in the state. The table is organized into sections, likely corresponding to different performance frameworks or metrics. The data is presented in a grid format with various colors highlighting different categories or values.

Go here to access a repository of files containing performance framework information for all schools and districts in the state. Files include spreadsheets with current and historical performance framework results, along with copies of PowerPoint presentations and other reports presented to the State Board of Education.

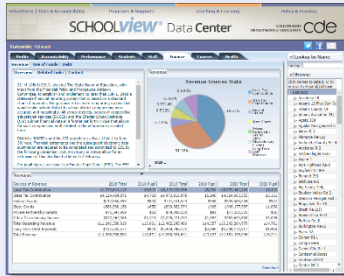
Teaching and Learning Survey (TLCC)

The screenshot shows the 'Teaching and Learning Conditions in Colorado (TLCC) Survey Results Dashboard 2022'. It features a header with the TLCC logo and navigation options. Below the header, there is a 'Survey Results Highlight' section with a progress indicator showing 25% completion. The main part of the dashboard is a table with columns for 'Current Year' and 'District: MONTEZUMA'. The table lists various survey items and their scores for the current year and previous years (2018, 2019, 2020, 2021). The items include categories like 'Classroom Environment', 'Instructional Practices', 'Professional Development', and 'School Leadership'. The scores are presented in a grid format with color-coded cells indicating performance levels.

The Teaching and Learning Conditions in Colorado (TLCC) is a statewide, confidential survey intended to support school, district, and state improvement planning, as well as research and policy. Use this to access an interactive report showing TLCC survey results for schools and districts across the state.

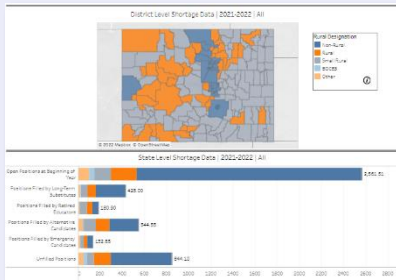
Other School and District Data

<https://www.cde.state.co.us/schoolview>



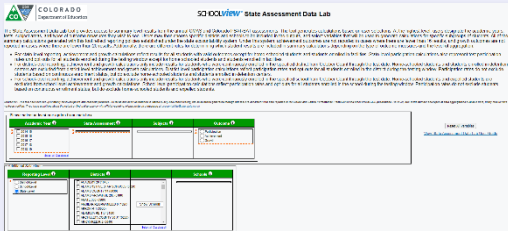
Data Center

School, district, and state-level education data including student enrollment, student attendance, student conduct, historic educator effectiveness, public finance, course offerings and health and wellness programs. Provides performance data prior to 2015.



Educator Talent Data Tools & Reports

Explore data related to the preparation, recruitment, employment, evaluation, and mobility of Colorado educators. Use this to find interactive reports and flat files.



Data Lab

Query the state's achievement and growth data to analyze results by school, district, state, and demographics.



Colorado Education Statistics

Download annual education statistics including attendance, graduation/completion, mobility/stability, dropout, school/district staff statistics, suspension/expulsion, and pupil membership data. Includes access to historical data.

To find other data resources, go to <https://www.cde.state.co.us/schoolview>.

If you have questions about the contents of this fact sheet or need further assistance: Contact the Accountability & Continuous Improvement Unit at accountability@cde.state.co.us.

For information regarding upcoming Accountability and Improvement Planning Trainings and Webinars, go to: https://www.cde.state.co.us/uiip/uiip_training.

For additional CDE fact sheets, go to: <https://www.cde.state.co.us/communications/factsheetsandfags>.